

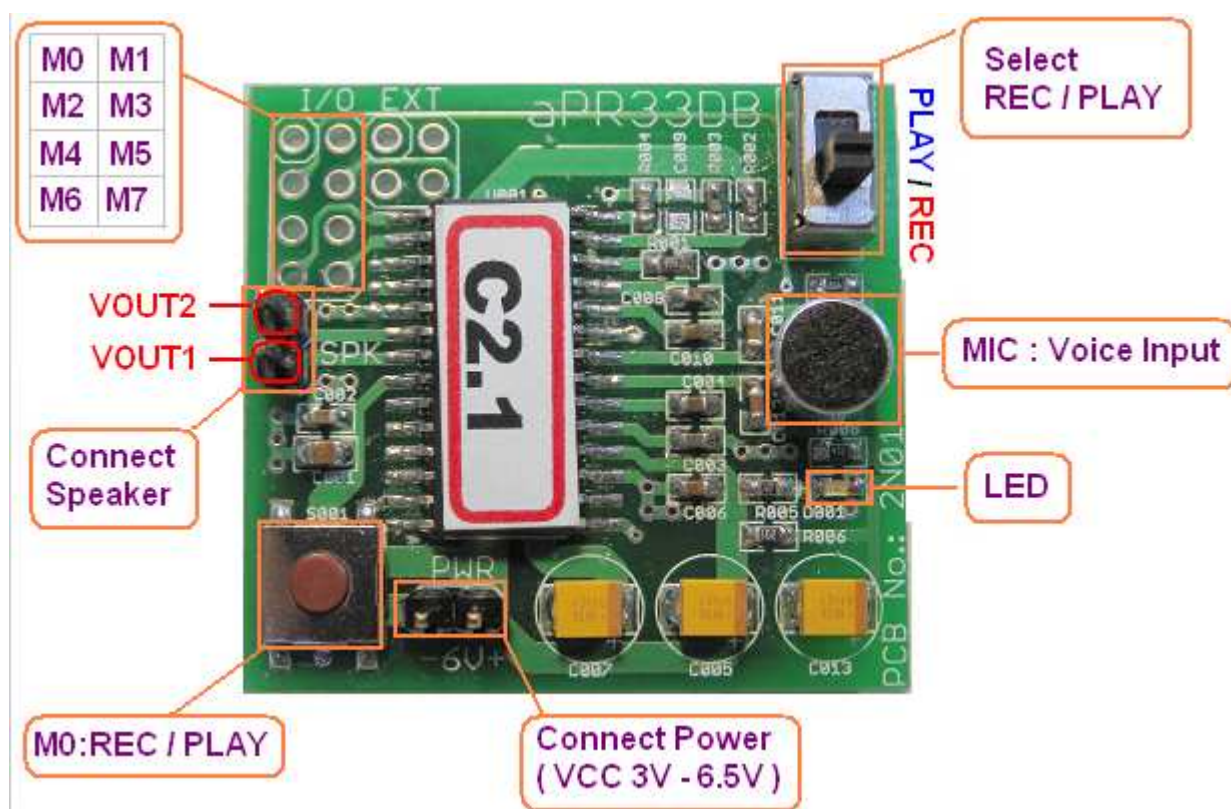
## aPR33DB-C2.1 (Fixed 1/ 2/ 4/ 8 Message mode)

### Demo Board User Guide

aPR33DB-C2.1 is suitable for aPR33A1 / aPR33A2 / aPR33A3, 3 chips with supporting Fixed 1/2/4/8 message, 4 modes.

#### ■ aPR33DB –C2.1 Function :

PCB size : 51 x 39 mm



#### ◆ RECORDING VOICE MESSAGE :

**SLIDE SW to REC** → Press and hold TACT SW(M0), hear BEEP sound with LED on to start REC through Microphone → Release TACT SW, hear BEEP BEEP sound with LED off to complete REC.

#### ◆ PLAY VOICE MESSAGE :

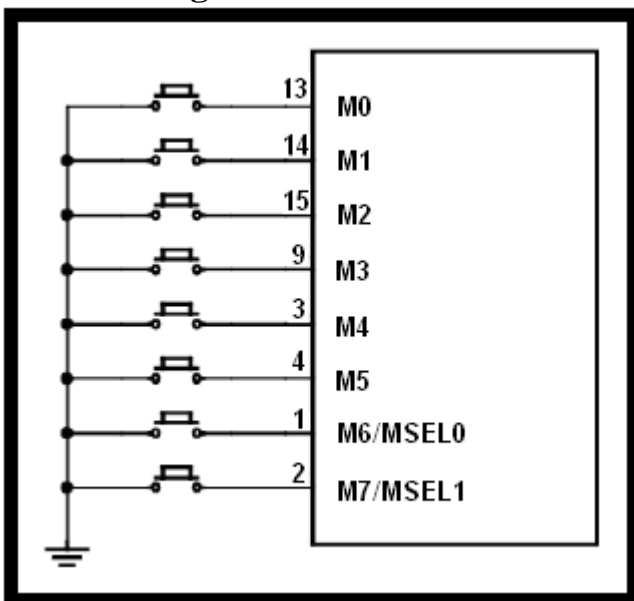
**SLIDE SW to PLAY** → Press and leave TACT SW(M0) to play voice with LED on. After play finished, LED will off.

Depends on different IC, 1/2/4/8 message modes can have different recording duration per message as below table :

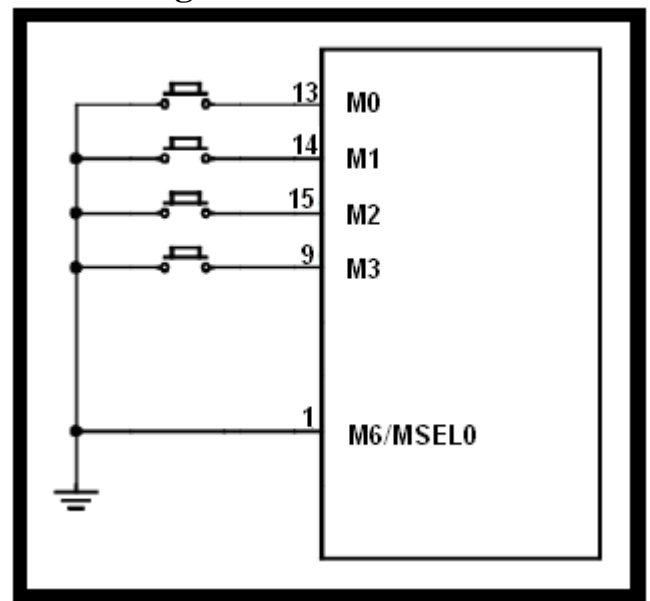
Message Mode Part No.	1 - FIXED Message	2 - FIXED Message	4 - FIXED Message	8 - FIXED Message
aPR33A3	680 sec	340 sec	170 sec	85 sec
aPR33A2	340 sec	170 sec	85 sec	42 sec
aPR33A1	170sec	85 sec	42 sec	21 sec

The initial setting is 8 message mode. User can define 1/2/4/8 message mode by setting MSEL0 and MSEL1 pin as below :

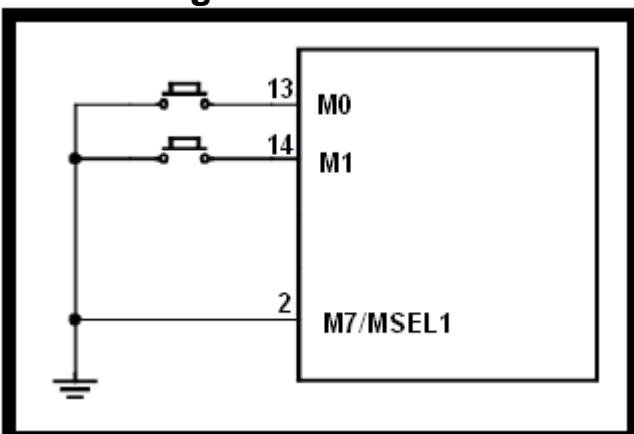
● **8-Message Mode**



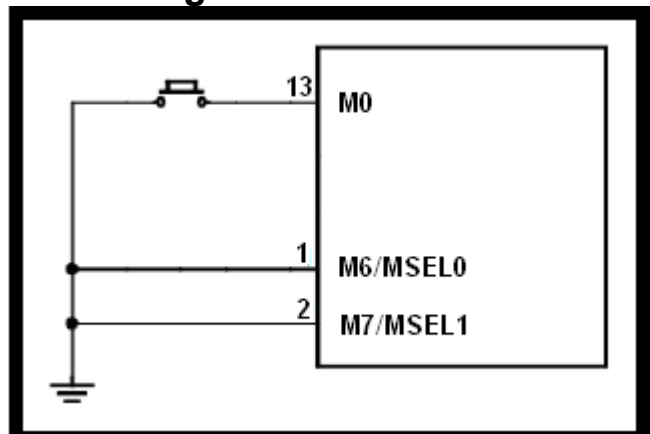
● **4-Message Mode**



● **2-Message Mode**



● **1-Message Mode**



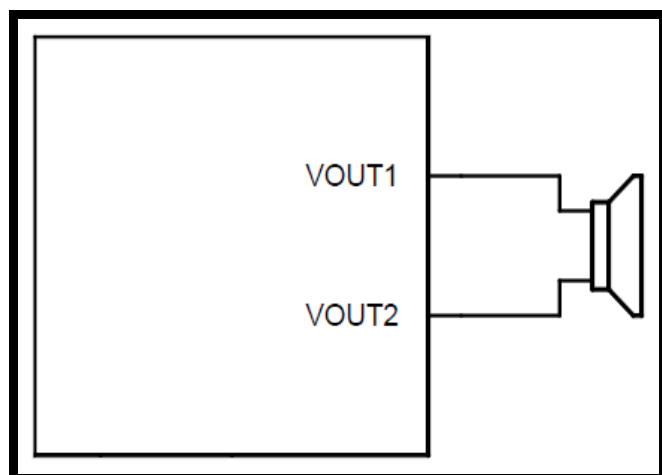
➤ If needs Line- In circuit application, please visit <http://www.aplusinc.com.tw> for datasheet.

## ■ VOICE OUTPUT

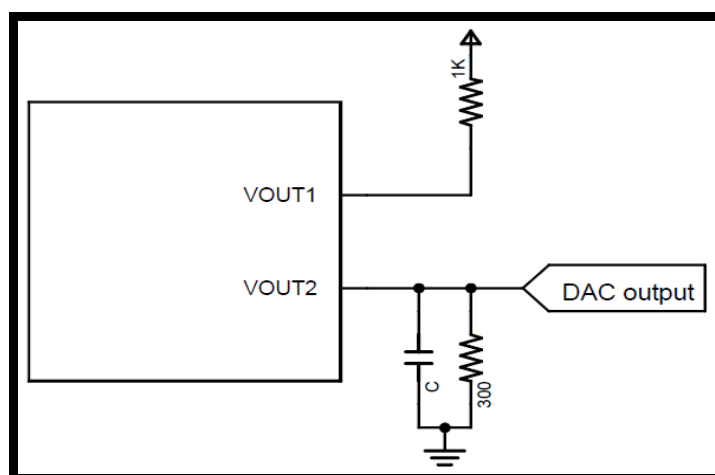
The aPR33DB support 2 voice output mode, PWM and DAC. ( Default : PWM )

The PWM mode use VOUT1 and VOUT2 pin to drive speaker.

The DAC mode use VOUT2 pin to connect your transistor or amplifier.



(A) PWM



(B) DAC

© For more DAC application, Please visit <http://www.aplusinc.com.tw> for data sheet.

---

**Ver. 2**

Add "DAC" application.

---

**Ver. 1**

Original version aPR33DB-C1.0 User Guide