



# A7670E\_TE KIT User Guide

**SIMCom Wireless Solutions Limited**

Building B, SIM Technology Building, No.633, Jinzhong Road

Changning District, Shanghai P.R. China

Tel: 86-21-31575100

[support@simcom.com](mailto:support@simcom.com)

[www.simcom.com](http://www.simcom.com)

<b>Document Title:</b>	A7670E_TEKIT_User Guide
<b>Version:</b>	1.00
<b>Date:</b>	2020-10-20
<b>Status:</b>	Released

## GENERAL NOTES

SIMCOM OFFERS THIS INFORMATION AS A SERVICE TO ITS CUSTOMERS, TO SUPPORT APPLICATION AND ENGINEERING EFFORTS THAT USE THE PRODUCTS DESIGNED BY SIMCOM. THE INFORMATION PROVIDED IS BASED UPON REQUIREMENTS SPECIFICALLY PROVIDED TO SIMCOM BY THE CUSTOMERS. SIMCOM HAS NOT UNDERTAKEN ANY INDEPENDENT SEARCH FOR ADDITIONAL RELEVANT INFORMATION, INCLUDING ANY INFORMATION THAT MAY BE IN THE CUSTOMER'S POSSESSION. FURTHERMORE, SYSTEM VALIDATION OF THIS PRODUCT DESIGNED BY SIMCOM WITHIN A LARGER ELECTRONIC SYSTEM REMAINS THE RESPONSIBILITY OF THE CUSTOMER OR THE CUSTOMER'S SYSTEM INTEGRATOR. ALL SPECIFICATIONS SUPPLIED HEREIN ARE SUBJECT TO CHANGE.

## COPYRIGHT

THIS DOCUMENT CONTAINS PROPRIETARY TECHNICAL INFORMATION WHICH IS THE PROPERTY OF SIMCOM WIRELESS SOLUTIONS LIMITED COPYING, TO OTHERS AND USING THIS DOCUMENT, ARE FORBIDDEN WITHOUT EXPRESS AUTHORITY BY SIMCOM. OFFENDERS ARE LIABLE TO THE PAYMENT OF INDEMNIFICATIONS. ALL RIGHTS RESERVED BY SIMCOM IN THE PROPRIETARY TECHNICAL INFORMATION , INCLUDING BUT NOT LIMITED TO REGISTRATION GRANTING OF A PATENT , A UTILITY MODEL OR DESIGN. ALL SPECIFICATION SUPPLIED HEREIN ARE SUBJECT TO CHANGE WITHOUT NOTICE AT ANY TIME.

### **SIMCom Wireless Solutions Limited**

Building B, SIM Technology Building, No.633 Jinzhong Road, Changning District, Shanghai P.R.China  
Tel: +86 21 31575100  
Email: [simcom@simcom.com](mailto:simcom@simcom.com)

### **For more information, please visit:**

<https://www.simcom.com/download/list-863-en.html>

### **For technical support, or to report documentation errors, please visit:**

<https://www.simcom.com/ask/> or email to: [support@simcom.com](mailto:support@simcom.com)

**Copyright © 2020 SIMCom Wireless Solutions Limited All Rights Reserved.**

## Version History

Date	Version	Description of change	Author
2020-10-20	1.00	Original	Li Gaochao Guo Xiaojun

SIMCom  
Confidential

## Contents

1. Detail description of A7670E_TE.....	7
2. TE Accessory.....	9
3. Installing TE on SIMCom EVB Board.....	10
4. TE KIT USB Driver Installation.....	11
5. Using SIMCom Serial Port Tool.....	13

SIMCom  
Confidential

## Figure Index

FIGURE 1: TE TOP VIEW.....	7
FIGURE 2: TE BOTTOM VIEW.....	8
FIGURE 3: TE AND SIMCOM-EVB ACCESSORY.....	10
FIGURE 4: A7670E DEVICES RECOGNIZED BY THE OPERATING SYSTEM.....	11
FIGURE 5: BROWSE FOR THE DRIVERS.....	11
FIGURE 6: ALL DRIVERS INSTALLED.....	12
FIGURE 7: SIMCOM SERIAL PORT TOOL INTRODUCTION.....	13

SIMCom  
Confidential

## SCOPE

THIS DOCUMENT DESCRIBES HOW TO TEST WITH A7670E\_TE. WITH THIS DOCUMENT, USER CAN GET USEFUL INFO ABOUT OUR SIMCOM-EVB QUICKLY.

*THIS DOCUMENT IS SUBJECT TO CHANGE WITHOUT NOTICE AT ANY TIME.*

### NOTE

For testing, customer needs SIMCOM\_EVB and TE KIT together.  
Therefore, customer should refer this document together with the SIMCOM\_EVB KIT User Guide

SIMCOM  
Confidential

# 1. Detail description of A7670E\_TE

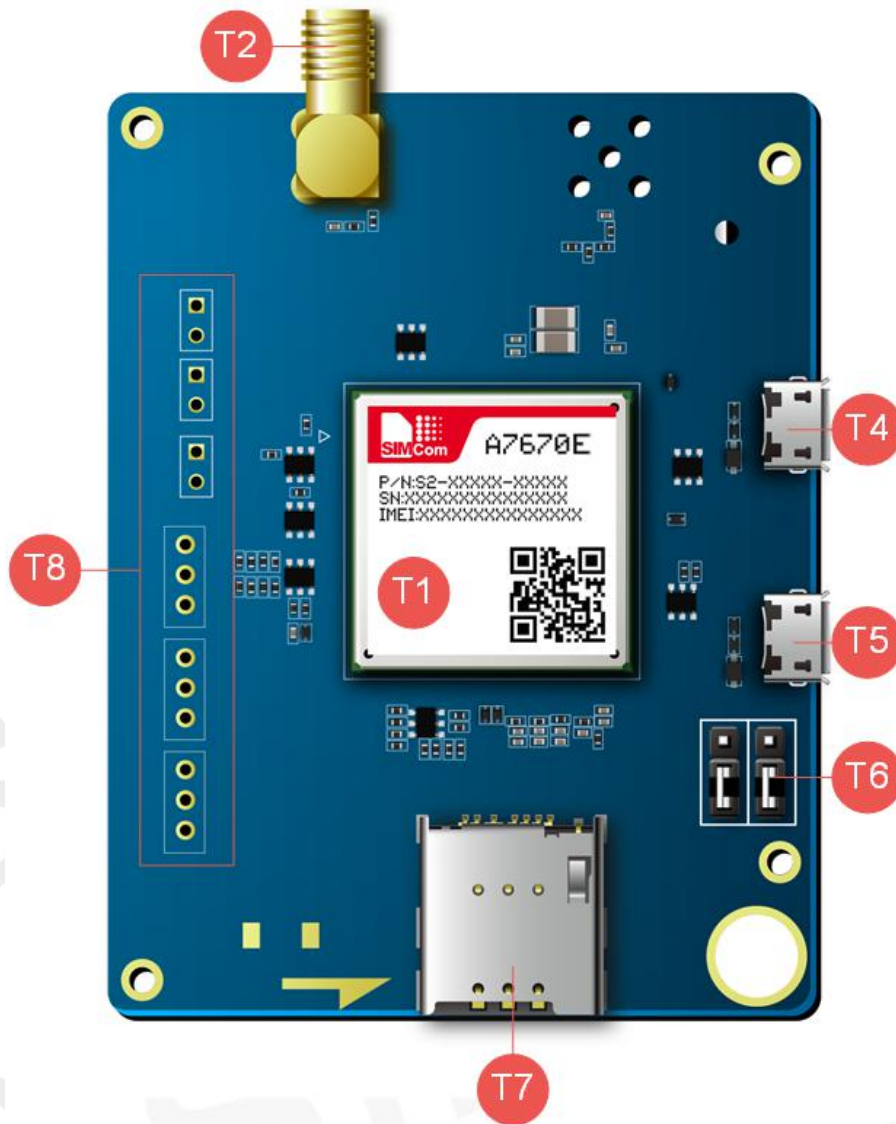


Figure 1: TE Top View

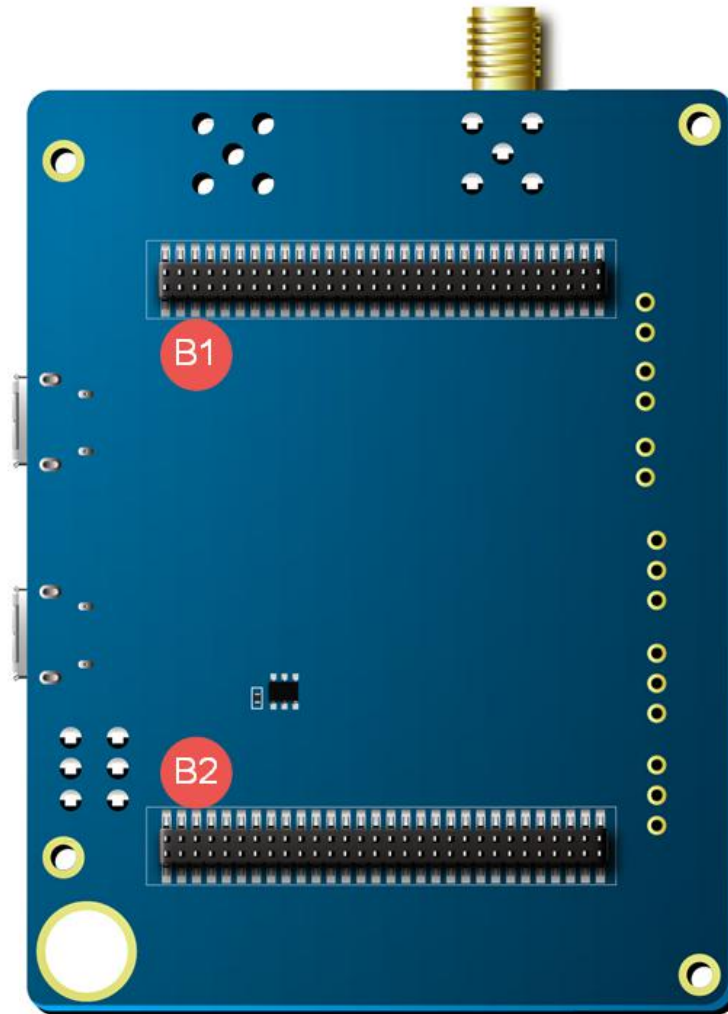


Figure 2: TE Bottom View

Attachment Label	Description
T1	Module
T2	Main Antenna Connector
T4	Micro USB Connector
T5	Micro USB Connector
T6*	UART Switch
T7	SIM Card Holder
T8	Test Point
B1	Connector (Connect to SIMCOM-EVB)
B2	Connector (Connect to SIMCOM-EVB)

#### NOTE

If UART Switch connected to above two pins by jumper, the debug UART will connect to EVB;  
If UART Switch connected to below two pins by jumper, the UART3 will connect to EVB.



## 2.TE Accessory

This TEKIT does not contain accessory. The main antenna is provided by the SIMCom EVB kit.

SIMCom  
Confidential

## 3. Installing TE on SIMCom EVB Board

TE Kits are designed to work with the EVB board and they are fitted like the following Figure 3.

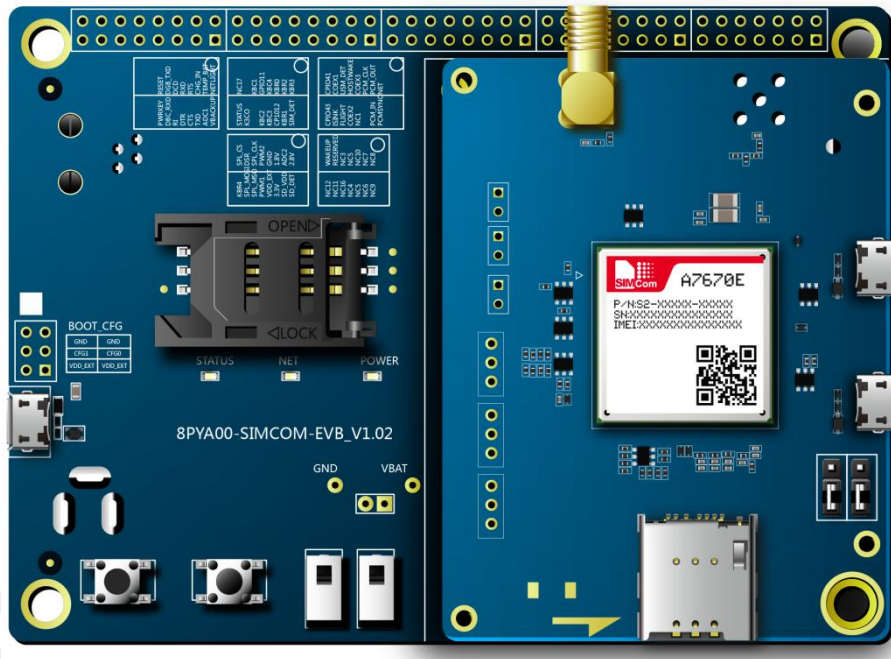


Figure 3: TE and SIMCOM-EVB Accessory

## 4. TE KIT USB Driver Installation

Users can manually install USB driver by the following steps:

1. Use USB cable to connect your PC to the Micro-USB port on the TE board. There should be several SimTech A7670E devices listed under other devices in Device manager like the following Figure 4.

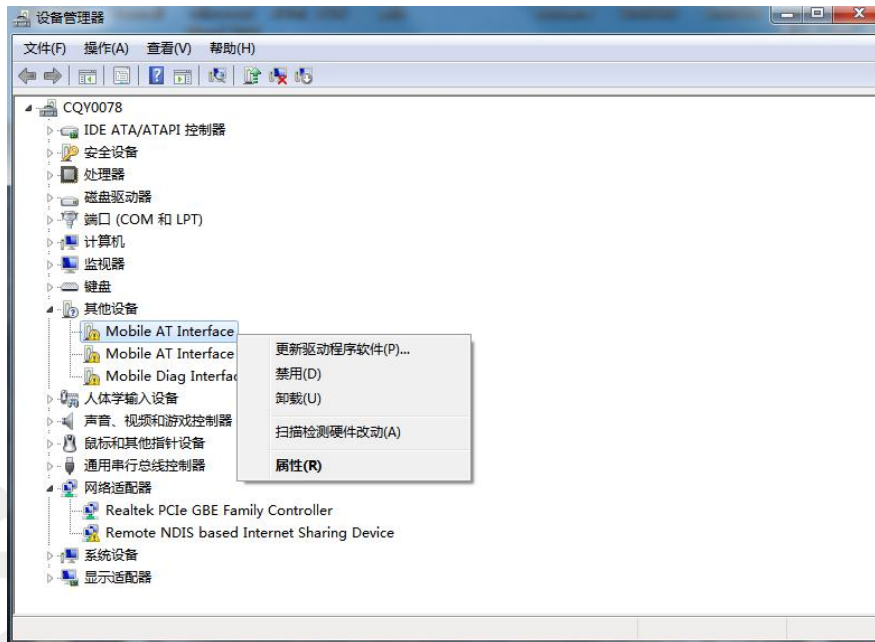


Figure 4: A7670E Devices Recognized by the Operating System

2. Right click each of the “Mobile AT Interface” devices and select “Update driver”.
3. Select “Browse my computer for driver software”.
4. Click “Browse” and manually search from the driver folder provided, then click “Next”.

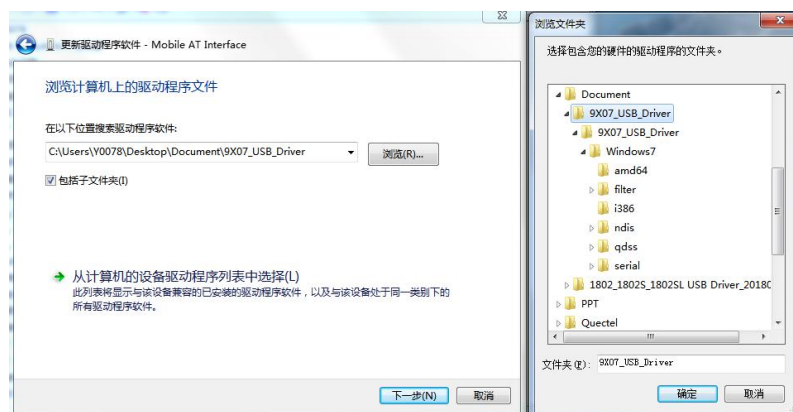


Figure 5: Browse for the drivers

5. Repeat same procedure for each of the listed “Mobile AT Interface” devices under “Other devices” until Device Manager lists three SimTech devices under “Ports (COM & LPT)”
6. Finally there are one SimTech device under Modems and two SimTech devices under Network Adapters as shown on Figure 6.

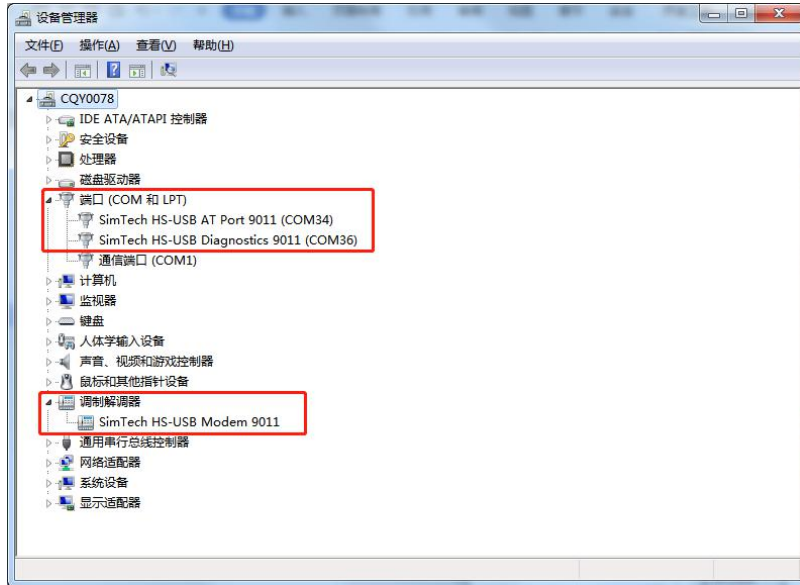


Figure 6: All drivers installed

After install driver, the ports can be used for following defined functions:

USB Ports	Description
SimTech HS-USB AT Port 9011	AT Command Communication Port
SimTech HS-USB Diagnostics 9011	Software Debug and FW Update Port
SimTech HS-USB Modem 9011	Modem Port for PPP

## 5. Using SIMCom Serial Port Tool

SIMCom has a serial port tool to test modules with AT Commands. Serial Port Tool can communicate with modules after opening COM Ports on list. On the following figure, every section of serial tool can be seen.

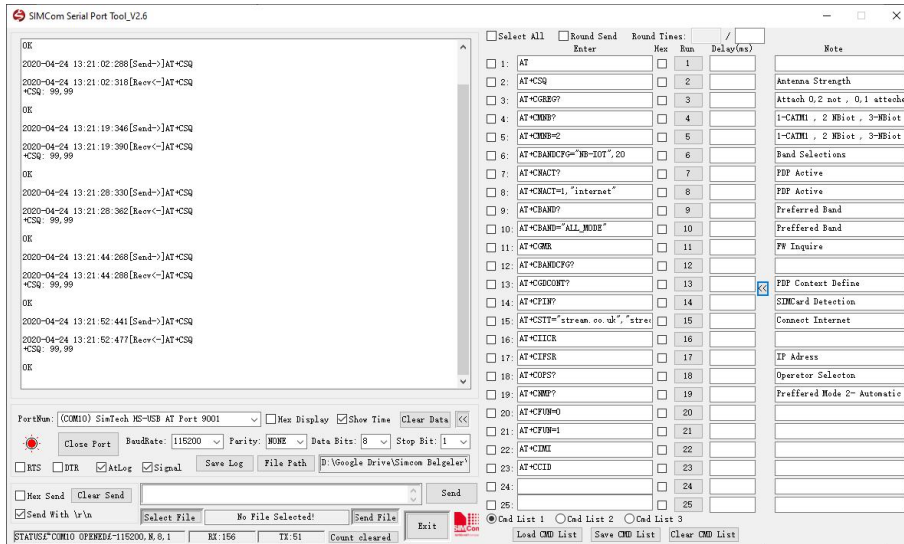


Figure 7: SIMCom Serial Port Tool Introduction

### NOTE

Driver: USB driver and Serial Port Tool can be obtained from local agents or SIMCom FAE.