

47 CFR PART 24 SUBPART E

# TEST REPORT

of

**GSM/GPRS 850/900/1800/1900 Module**

Model Name: SIM548Z, SIM508Z  
Trade Name: SIMCOM  
Report No.: SH07010011E01  
FCC ID: UDV-0606020070210 (SIM548Z)  
UDV-0606020070305 (SIM508Z)

*prepared for*

**Shanghai Simcom Ltd.**

SIM Technology Building, 700 Yishan Rd., Shanghai, 200233



**Shenzhen Morlab Communications Technology Co., Ltd.**

3/F, Electronic Testing Building, Shahe Road, Xili,

Nanshan District, Shenzhen, 518055 P. R. China

Tel: +86 755 86130398

Fax: +86 755 86130218



**NOTE:** This test report can be duplicated completely for the legal use with the approval of the applicant, it shall not be reproduced except in full, without the written approval of Shenzhen Morlab Communications Technology Co., Ltd. Any objections should be raised to us within thirty workdays since the date of issue.

## TABLE OF CONTENTS

<b>1.</b>	<b>TEST RESULT CERTIFICATION .....</b>	<b>4</b>
<b>2.</b>	<b>GENERAL INFORMATION .....</b>	<b>5</b>
<b>2.1</b>	<b>Equipment under Test (EUT) Description .....</b>	<b>5</b>
<b>2.2</b>	<b>Test Standards and Results .....</b>	<b>6</b>
<b>2.3</b>	<b>Facilities and Accreditations .....</b>	<b>7</b>
2.3.1	Facilities .....	7
2.3.2	Test Equipments .....	7
2.3.3	Test Environment Conditions .....	8
<b>3.</b>	<b>47 CFR PART 2, PART 24E REQUIREMENTS .....</b>	<b>9</b>
<b>3.1</b>	<b>Test System Setup and Test Configuration .....</b>	<b>9</b>
3.1.1	Conducted Related Tests .....	9
3.1.2	Radiated Power and Spurious Emission Tests .....	10
3.1.3	Frequency Stability Test .....	11
<b>3.2</b>	<b>Frequencies .....</b>	<b>12</b>
3.2.1	Requirement .....	12
3.2.2	Test Procedure .....	12
3.2.3	Test Result .....	12
<b>3.3</b>	<b>Conducted RF Output Power .....</b>	<b>14</b>
3.3.1	Requirement .....	14
3.3.2	Test Procedure .....	14
3.3.3	Test Result .....	14
<b>3.4</b>	<b>Occupied Bandwidth .....</b>	<b>17</b>
3.4.1	Occupied Bandwidth Definition .....	17
3.4.2	Test Procedure .....	17
3.4.3	Test Result .....	17
<b>3.5</b>	<b>Conducted Spurious Emission .....</b>	<b>20</b>
3.5.1	Requirement .....	20
3.5.2	Test Procedure .....	20
3.5.3	Test Result .....	20
<b>3.6</b>	<b>Transmitter Radiated Power (EIRP/ERP) .....</b>	<b>26</b>

3.6.1	Requirement .....	26
3.6.2	Test Procedure .....	26
3.6.3	Test Result .....	26
<b>3.7</b>	<b>Radiated Spurious Emission.....</b>	<b>29</b>
3.7.1	Requirement .....	29
3.7.2	Test Procedure .....	29
3.7.3	Test Result .....	29
<b>3.8</b>	<b>Frequency Stability .....</b>	<b>31</b>
3.8.1	Requirement .....	31
3.8.2	Test Procedure .....	31
3.8.3	Test Result .....	32
<b>I</b>	<b>PHOTOGRAPH OF THE TEST SETUP .....</b>	<b>33</b>
<b>II</b>	<b>PHOTOGRAPH OF THE EUT .....</b>	<b>34</b>



## 1. Test Result Certification

Equipment under Test: GSM/GPRS 850/900/1800/1900 Module

Trade Name: SIMCOM

Model Name: SIM548Z, SIM508Z

FCC ID: UDV-0606020070210 (SIM548Z)

UDV-0606020070305 (SIM508Z)

Applicant: Shanghai Simcom Ltd.

SIM Technology Building, 700 Yishan Rd., Shanghai, 200233

Manufacturer: Shanghai Simcom Ltd.

SIM Technology Building, 700 Yishan Rd., Shanghai, 200233

Test Standards: 47 CFR Part 2

47 CFR Part 24 Subpart E

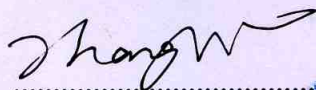
Test Result: PASS

### \* We hereby certify that:

The equipment under test was tested by Shenzhen Morlab Communications Technology Co., Ltd. The test data, data evaluation, test procedures and equipment configurations shown in this report were made in accordance with the requirement of related FCC rules.

The test results of this report only apply for the tested sample equipment identified above. The test report shall be invalid without all the signatures of the test engineer, the reviewer and the approver.

Tested by:

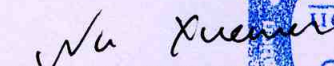


Zhang Weimin

Dated:

2007.4.2

Reviewed by:

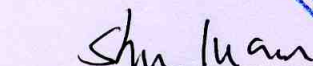


Wu Xuewen

Dated:

2007.4.2

Approved by:



Shu Luan

Dated:

2007.4.2



## 2. General Information

### 2.1 Equipment under Test (EUT) Description

Description .....: GSM/GPRS 850/900/1800/1900 Module  
Model Name .....: SIM548Z, SIM508Z  
Serial No.....: P10606450000127 (SIM548Z)  
IMEI .....: 352134010032978 (SIM548Z)  
Hardware Version .....: V2.03  
Software Version .....: TTPCom 10.0  
Emission Designator.....: 300KGXW  
Modulation .....: GSM  
Frequency .....: Tx: 1850.20 - 1909.80MHz  
Rx: 1930.20 - 1989.80MHz  
Power.....: 1Watt

#### NOTE:

1. The SIM548Z and SIM508Z are series of GSM modules having the same electric circuit structure and critical components, thus they are considered to have the same EMC and RF performance. The only difference is that the SIM548Z supports four bands (850MHz / 900MHz / 1800MHz / 1900MHz) while the SIM508Z supports three bands (900MHz / 1800MHz / 1900MHz). According to the requirements of the applicant, the tests in this report were performed for SIM548Z; the test results in this report should also be applicable for that of SIM508Z.
2. In this test report, only PCS1900MHz band was tested.
3. The normal configuration for the EUT is the Module (MS) associated with ancillary equipments e.g. the AC Adapter (Charger).
4. The transmitter (Tx) frequency arrangement of the PCS 1900MHz band for the EUT can be represented with a formula  $F(n)=1850.2+0.2*(n-512)$ ,  $512 \leq n \leq 810$ .
5. The EUT power is supplied by the adapter (Output: DC 6V, 2000mA), which is specified by the applicant.
6. For detailed features about the EUT, please see user manual supplied by the applicant.

## 2.2 Test Standards and Results

The objective of the report is to perform tests according to 47 CFR Part 2, Part 24 for FCC ID Certification:

No.	Identity	Document Title
1	47 CFR Part 2 (10-1-05 Edition)	Frequency Allocations and Radio Treaty Matters: General Rules and Regulations
2	47 CFR Part 24 (10-1-05 Edition)	Personal Communications Services

Test detailed items and the results are as below:

No.	Rules	Test Type	Result	Date of Test
1	§2.106 §24.229	Frequencies	PASS	2007-3-1
2	§2.1046	Conducted RF Output Power at Antenna Terminal	PASS	2007-3-30
3	§2.1049	Occupied Bandwidth	PASS	2007-3-1
4	§2.1051 §2.1057 §24.238	Conducted Spurious Emission at Antenna Terminal	PASS	2007-3-1
5	§24.232	Transmitter Radiated Power (EIPR/ERP)	PASS	2007-3-30
6	§2.1053 §2.1057 §24.238	Radiated Spurious Emission	PASS	2007-3-1
7	§2.1055 §24.235	Frequency Stability	PASS	2007-3-2

## 2.3 Facilities and Accreditations

### 2.3.1 Facilities

Shenzhen Electronic Product Quality Testing Center (Morlab) is a testing organization accredited by China National Accreditation Board for Laboratories (CNAL) according to ISO/IEC 17025. The accreditation certificate number is L1659.

All measurement facilities used to collect the measurement data are located at Electronic Testing Building, Shahe Road, Xili, Nanshan District, Shenzhen, P. R. China. The site was constructed in conformance with the requirements of ANSI C63.7, ANSI C63.4 and CISPR Publication 22, the FCC registration number is 741109.

### 2.3.2 Test Equipments

No.	Description	Specification
1	System Simulator	Manufacturer: Rohde&Schwarz Model No.: CMU200 Serial No.: 100448
2	System Simulator	Manufacturer: Agilent Model No.: E5515C Serial No.: GB43130131
3	Spectrum Analyzer	Manufacturer: Agilent Model No.: E7405A Serial No.: US44210471
4	Telecommunication Antenna	Manufacturer: European Antennas Model No.: PSA-45010R/356 Serial No.: 403688-001
5	Trilogy Antenna	Manufacturer: Schwarzbeck Model No.: VULB 9163 Serial No.: 9163-274
6	Horn Antenna	Manufacturer: Schwarzbeck Model No.: BBHA 9120C Serial No.: 9120C-384
7	Power Splitter	Manufacturer: WEINSCHEL Model No.: 1506A Serial No.: NW521
8	Anechoic Chamber	Manufacturer: Albatross Projects GmbH
9	DC Power Supply	Manufacturer: Good Will Instrument Co., Ltd.
10	Temperature Chamber	Manufacturer: Chongqing YinHe Experimental Equip. Co., Ltd.

NOTE:

1. Equipments listed above have been calibrated and are in the period of validation.

### 2.3.3 Test Environment Conditions

During the measurement, the environmental conditions were within the listed ranges:

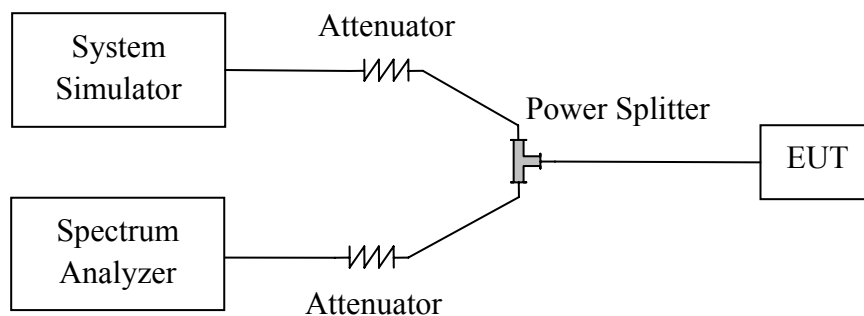
Temperature:	20 - 25°C
Relative Humidity:	40 - 50%
Atmospheric Pressure:	96kPa



### 3. 47 CFR Part 2, Part 24E Requirements

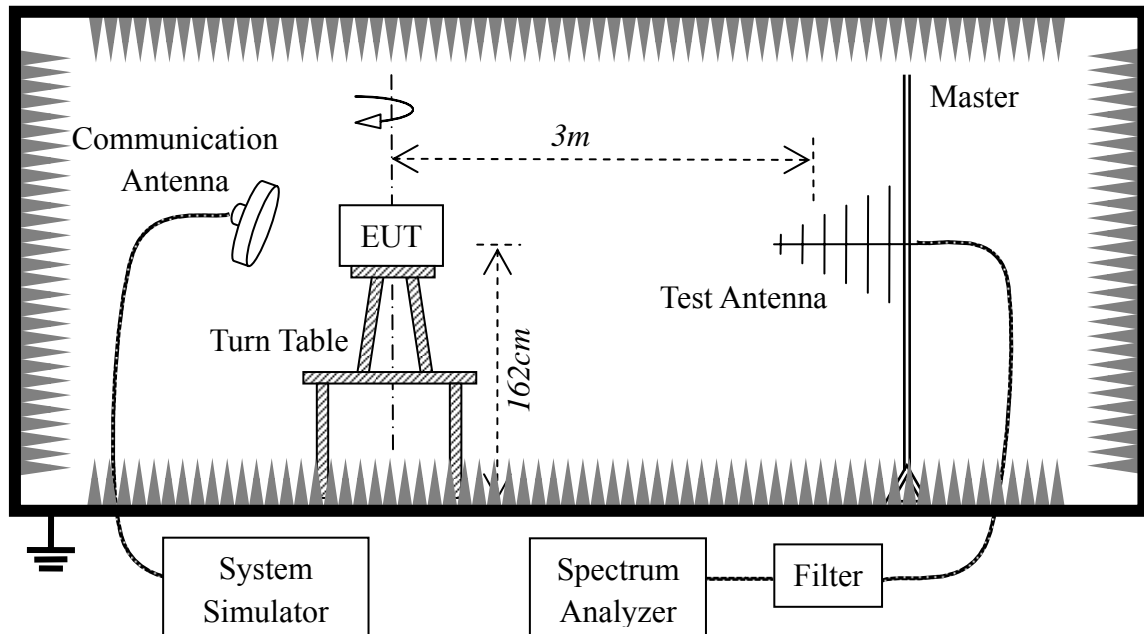
#### 3.1 Test System Setup and Test Configuration

##### 3.1.1 Conducted Related Tests



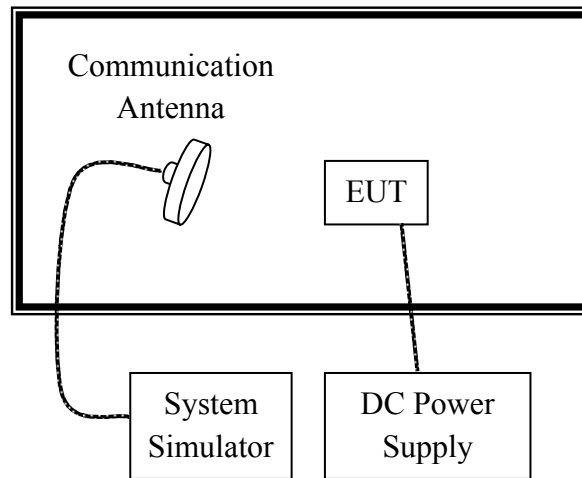
1. The EUT is coupled to the Spectrum Analyzer and the System Simulator with the suitable Attenuators through the Power Splitter; the path loss is calibrated to correct the reading.
2. The EUT is configured here as MS + Adapter.
3. The EUT is commanded via the System Simulator (SS) to operate at the maximum output power i.e. Power Control Level (PCL) = 0 and Power Class = 1.
4. The BCCH number of the SS used here is 520. A communication link is established between the EUT and the SS.
5. The Spectrum Analyzer is set to max-peak detector function and maximum hold mode.

### 3.1.2 Radiated Power and Spurious Emission Tests



1. The test is performed in a full-Anechoic Chamber; the air loss of the site and the factors of the test system are pre-calibrated using the substitution method.
2. The EUT is configured as MS + Adapter.
3. The EUT is placed on the vertical axis of a Turn Table 1.62 meters above the ground.
4. The Test Antenna is a bi-log one or a horn one, and the Test Antenna is at the same height as the EUT.
5. The EUT is commanded via the System Simulator (SS) to operate at the maximum output power i.e. Power Control Level (PCL) = 0 and Power Class = 1.
6. The BCCH number of the SS used here is 520. A communication link is established between the EUT and the SS.
7. The Spectrum Analyzer is set to max-peak detector function and maximum hold mode.

### 3.1.3 Frequency Stability Test



1. The test is performed in a Temperature Chamber.
2. The EUT is configured as MS + Adapter.
3. The BCCH number of the SS used here is 520.

## 3.2 Frequencies

### 3.2.1 Requirement

According to FCC §24.229, the frequencies available in the Broadband PCS services are listed as below, in accordance with the frequency allocations table of FCC §2.106.

- (a) The following frequency blocks are available for assignment on an MTA basis:
  - Block A: 1850 - 1865MHz paired with 1930 - 1945MHz;
  - Block B: 1870 - 1885MHz paired with 1950 - 1965MHz.
- (b) The following frequency blocks are available for assignment on an BTA basis:
  - Block C: 1895 - 1910 MHz paired with 1975 - 1990MHz;
  - Block D: 1865 - 1870 MHz paired with 1945 - 1950MHz;
  - Block E: 1885 - 1890 MHz paired with 1965 - 1970MHz;
  - Block F: 1890 - 1895 MHz paired with 1970 - 1975MHz.

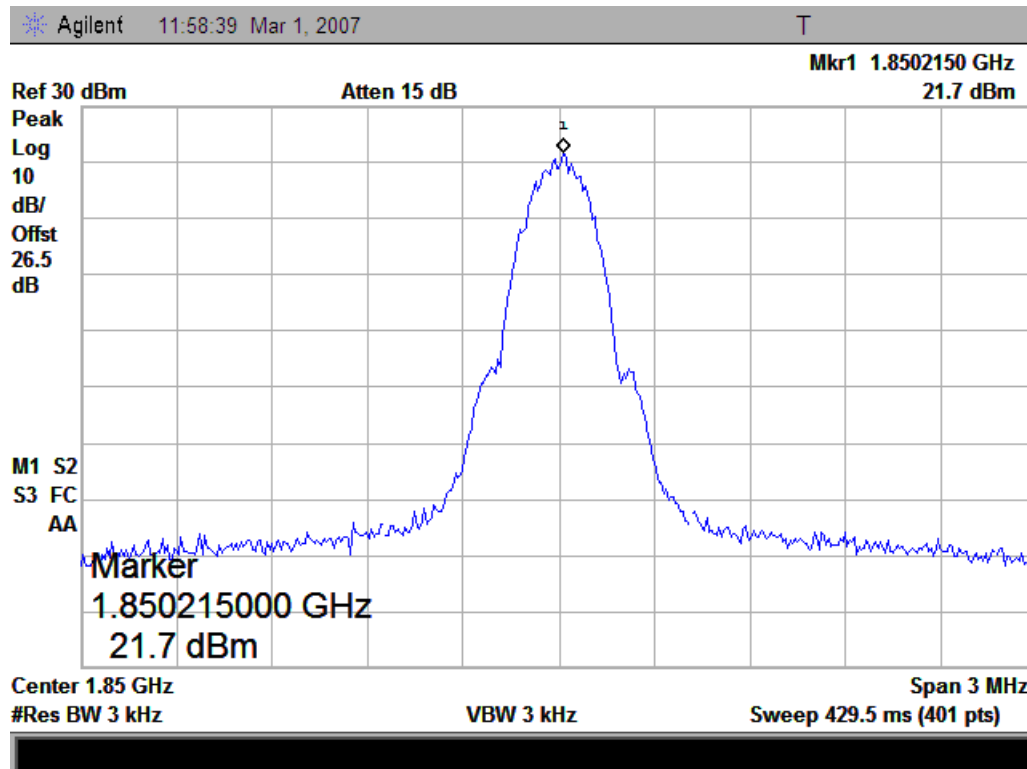
### 3.2.2 Test Procedure

1. Perform test system setup as section 3.1.1.
2. The resolution bandwidth of the Spectrum Analyzer is set to at lease one percent of the emission bandwidth of the fundamental emission of the transmitter, e.g. for GSM modulated signal (here used):  $RBW=VBW=3kHz$ , for CDMA modulated signal:  $RBW=VBW=30kHz$ .
3. The lowest and the highest channels are selected to perform tests respectively. Set the TCH number to 512 via the SS as the lowest channel.
4. Set the frequency range of the Spectrum Analyzer suitably to capture the waveform; search peak and mark it; finally record the plot.
5. Set the TCH number to 810 as the highest channel, then repeat step 4.

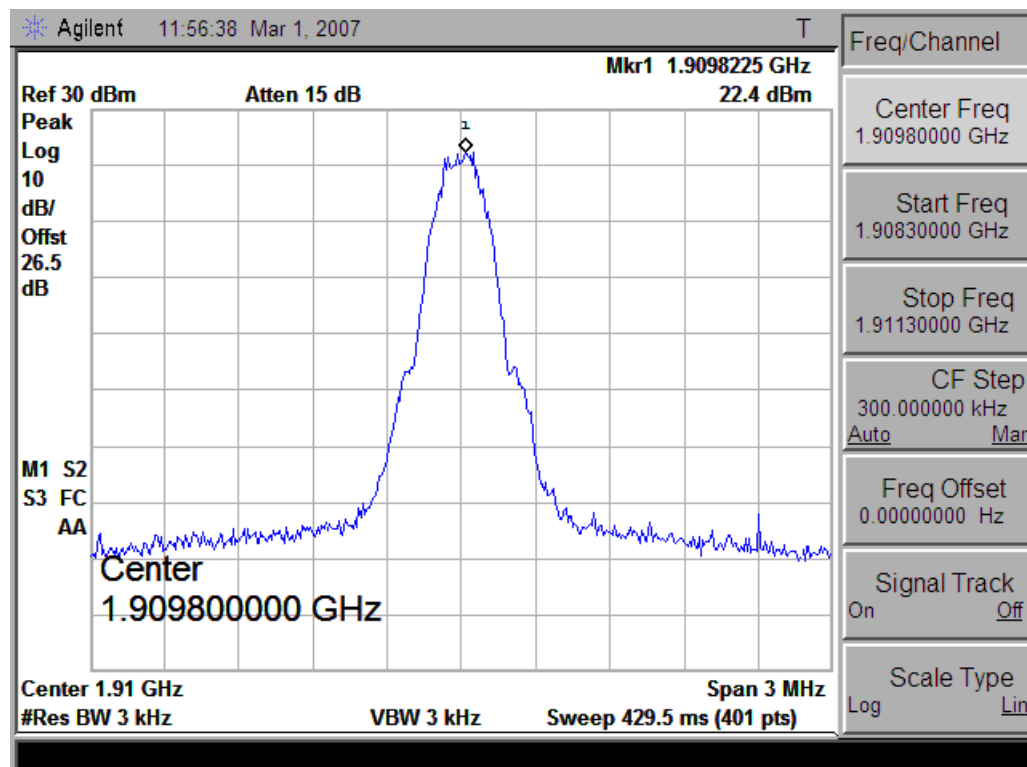
### 3.2.3 Test Result

The transmitter (Tx) frequency arrangement of the PCS 1900MHz band is represented with a formula  $F(n)=1850.2+0.2*(n-512)$ ,  $512 \leq n \leq 810$ . The frequencies of the lowest channel and the highest channel are listed as follows.

1. Plot when the TCH number set to 512:



2. Plot when the TCH number set to 810:





### 3.3 Conducted RF Output Power

#### 3.3.1 Requirement

According to FCC §2.1046(a), for transmitters other than single sideband, independent sideband and controlled carrier radiotelephone, power output shall be measured at the RF output terminals when the transmitter is adjusted in accordance with the tune-up procedure to give the values of current and voltage on the circuit elements specified in §2.1033(c)(8). The electrical characteristics of the radio frequency load attached to the output terminals when this test is made shall be stated.

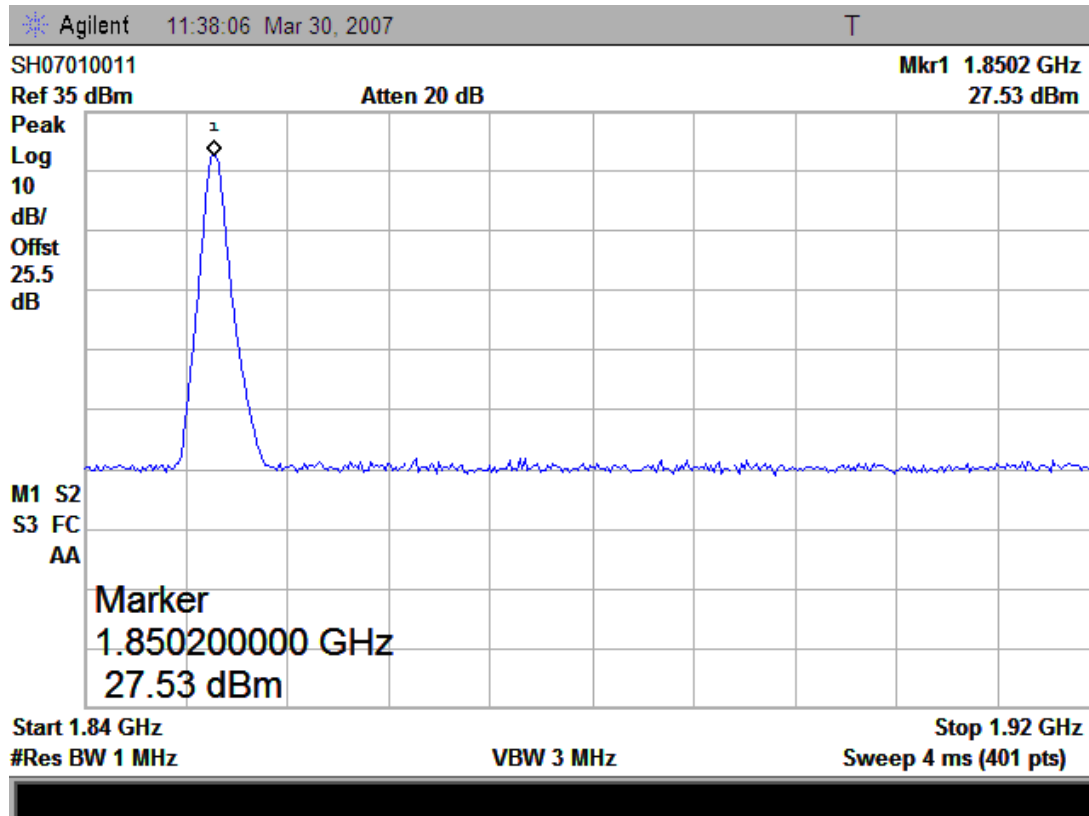
#### 3.3.2 Test Procedure

1. Perform test system setup as section 3.1.1 (the radio frequency load attached to the EUT antenna terminal is  $50\Omega$ ).
2. The resolution bandwidth of the Spectrum Analyzer is set to be comparable to the emission bandwidth of the transmitter, e.g. for GSM modulated signal (here used):  $RBW=VBW=1\text{MHz}$ , for CDMA modulated signal:  $RBW=VBW=3\text{MHz}$ .
3. The low, middle and the high channels are selected to perform tests respectively. Set the TCH number to 512 as the low channel.
4. Set the frequency range of the Spectrum Analyzer suitably to capture the waveform; search peak and mark it; finally record the peak and the plot.
5. Set the TCH number to 661 as the middle channel, then repeat step 4.
6. Set the TCH number to 810 as the high channel, then repeat step 4.

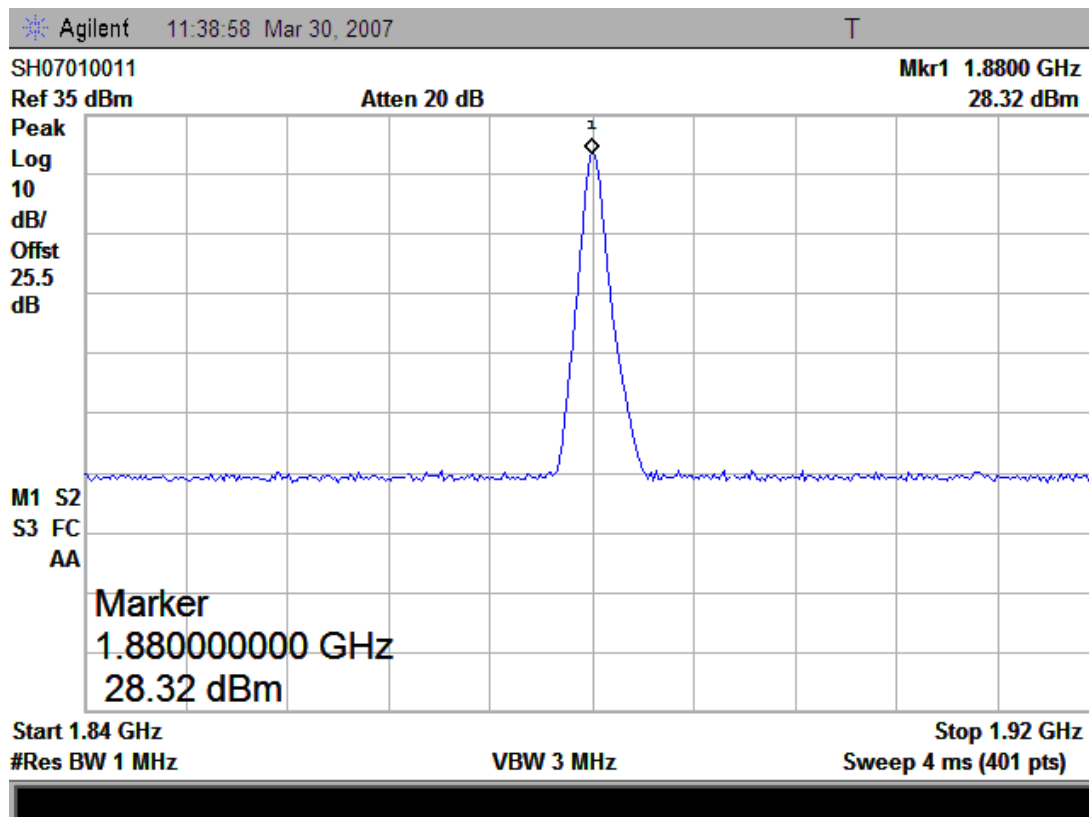
#### 3.3.3 Test Result

No.	Channel	Frequency (MHz)	Measured Power		Rated Power	
			dBm	Watt	dBm	Watt
1	512	1850.2	27.53	0.57	30	1
2	661	1880.0	28.32	0.68	30	1
3	810	1909.8	28.84	0.77	30	1

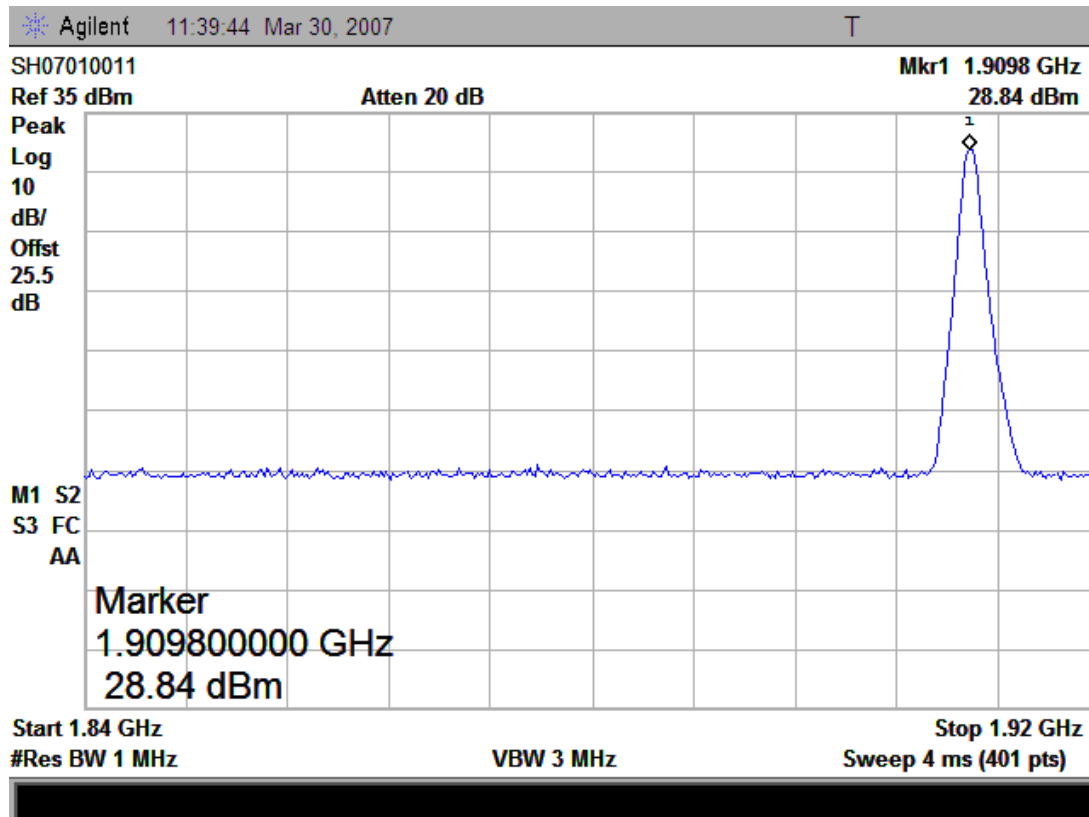
1. Plot when the TCH number set to 512:



2. Plot when the TCH number set to 661:



3. Plot when the TCH number set to 810:



### 3.4 Occupied Bandwidth

#### 3.4.1 Occupied Bandwidth Definition

According to FCC §2.1049, the occupied bandwidth is the frequency bandwidth such that, below its lower and above its upper frequency limits, the mean powers radiated are each equal to 0.5 percent of the total mean power radiated by a given emission.

Occupied bandwidth is also known as the 99% emission bandwidth, or 20dB bandwidth ( $10 \cdot \log 1\%$  is equal to 20dB) taking the total RF output power as reference.

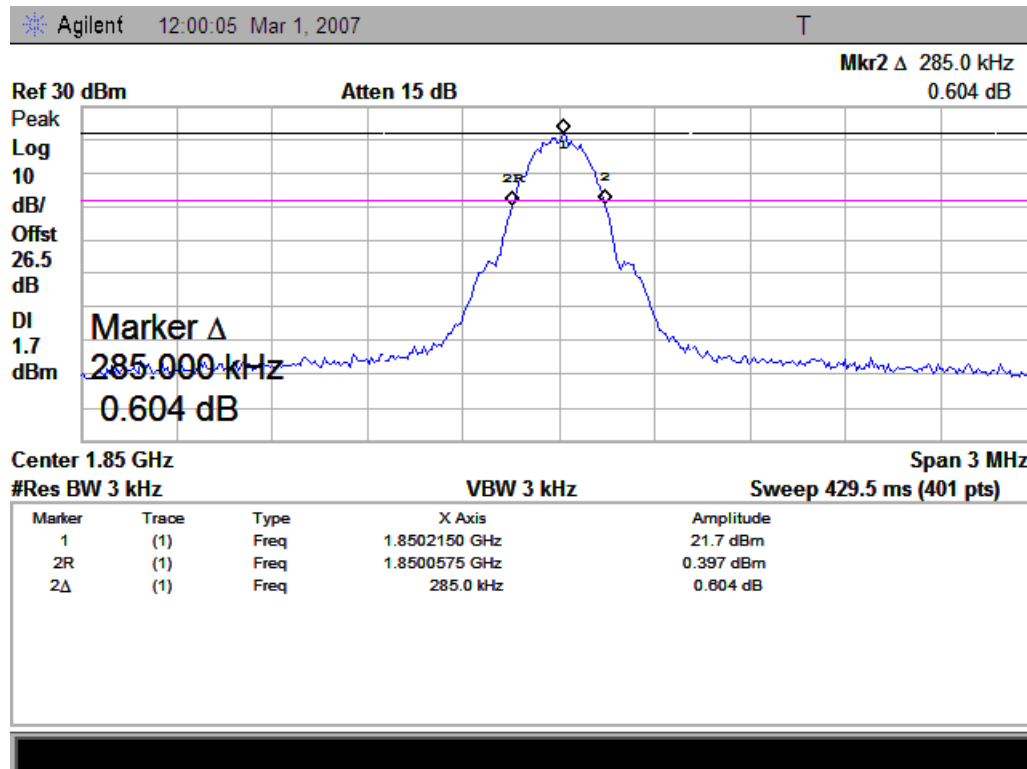
#### 3.4.2 Test Procedure

1. Perform test system setup as section 3.1.1.
2. The resolution bandwidth of the Spectrum Analyzer is set to at least one percent of the emission bandwidth, e.g. for GSM modulated signal (here used):  $RBW=VBW=3\text{kHz}$ , for CDMA modulated signal:  $RBW=VBW=30\text{kHz}$ .
3. The low, middle and the high channels are selected to perform tests respectively. Set the TCH number to 512 as the low channel.
4. Set the frequency range of the Spectrum Analyzer suitably to capture the waveform; search peak; make a line whose value is 20dB lower than the peak; mark two points which the line intersected the waveform at; finally record the delta of the two points as the occupied bandwidth and the plot.
5. Set the TCH number to 661 as middle channel, then repeat step 4.
6. Set the TCH number to 810 as high channel, then repeat step 4.

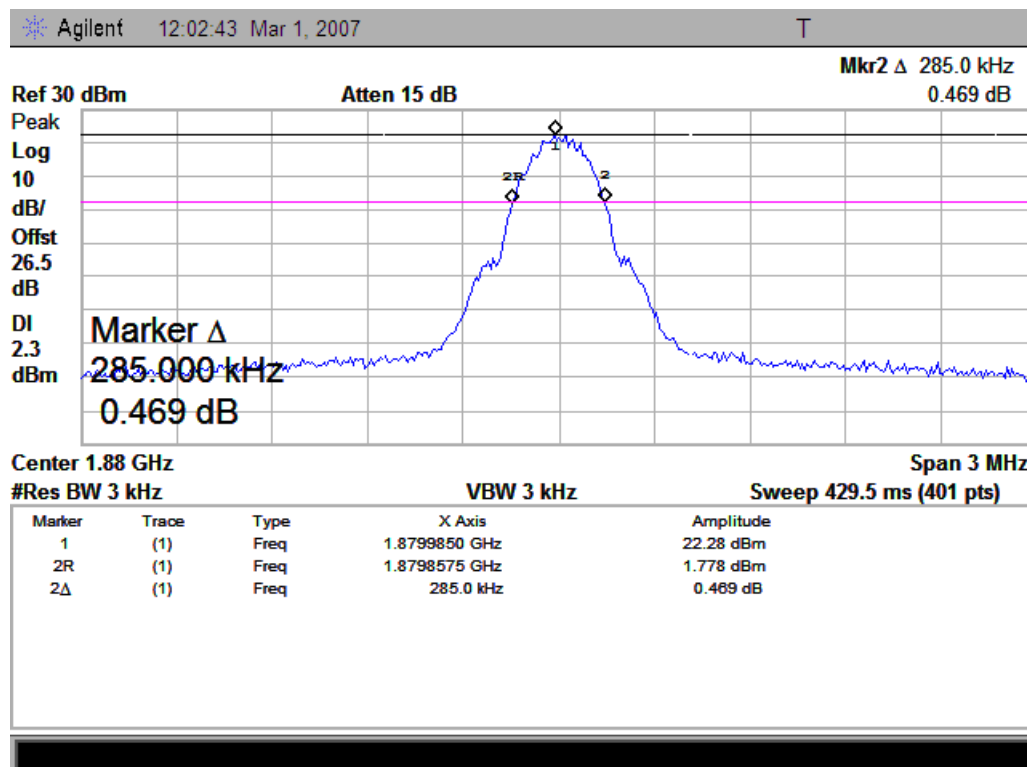
#### 3.4.3 Test Result

No.	Channel	Frequency (MHz)	Measured Occupied Bandwidth (kHz)
1	512	1850.2	285.0
2	661	1880.0	285.0
3	810	1909.8	285.0

1. Plot when the TCH number set to 512:

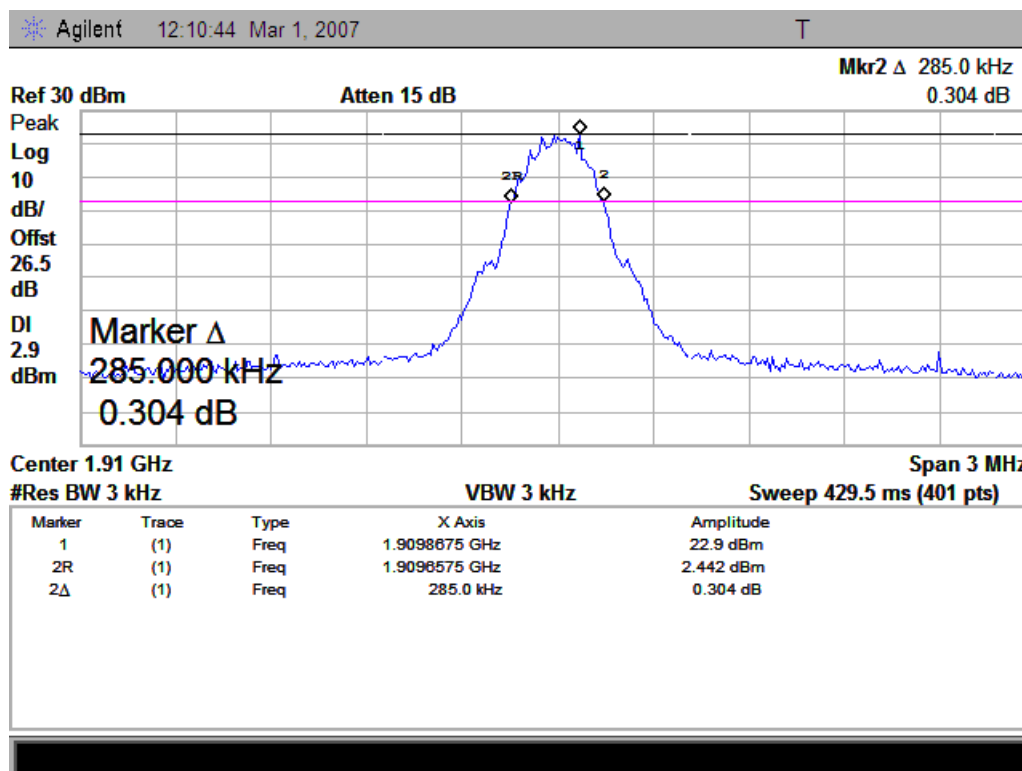


2. Plot when the TCH number set to 661:



3. Plot when the TCH number set to 810:





### **3.5 Conducted Spurious Emission**

#### **3.5.1 Requirement**

According to FCC §24.238(a), the power of any emission outside of the authorized operating frequency ranges must be attenuated below the transmitting power (P) by a factor of at least  $43+10*\log(P)$ dB. This calculated to be -13dBm.

According to FCC §24.238(b), in the 1MHz bands immediately outside and adjacent to the frequency block a resolution bandwidth of at least one percent of the emission bandwidth of the fundamental emission of the transmitter may be employed. Thus the 26dB emission bandwidth is measurement for showing compliance at the band-edge.

#### **3.5.2 Test Procedure**

1. Perform test system setup as section 3.1.1.
2. Make a limit line whose value is -13dBm on the Spectrum Analyzer.
3. The lowest, middle and the highest channels are selected to perform tests respectively. Set the TCH number to 512 as the lowest channel.
4. Set the RBW of the Spectrum Analyzer to 1MHz, and the measuring frequency range from 9kHz to 10<sup>th</sup> harmonic of the fundamental frequency (here used 26.5GHz); mark the fundamental frequency and the harmonics thereof; finally record the harmonics and the plot. Note, the measuring frequency range can be divided into several parts to perform tests.
5. In the 1MHz bands immediately outside and adjacent to the frequency black, the RBW of the Spectrum Analyzer was set to at least one percent of the emission bandwidth of the fundamental emission of the transmitter, e.g. for GSM modulated signal (here used): RBW=3kHz, for CDMA modulated signal: RBW=30kHz.
6. Set the TCH number to 661 as the middle channel, then repeat step 4.
7. Set the TCH number to 810 as the highest channel, then repeat step 4 and 5.

#### **3.5.3 Test Result**

##### **3.5.3.1 Table for the Harmonics and Plots for the Spurious Emission**

1. Table for the harmonics:

Note: The symbol “---” in the table below means that the emission power is too small to be measured and is at least 12dB below the limit.

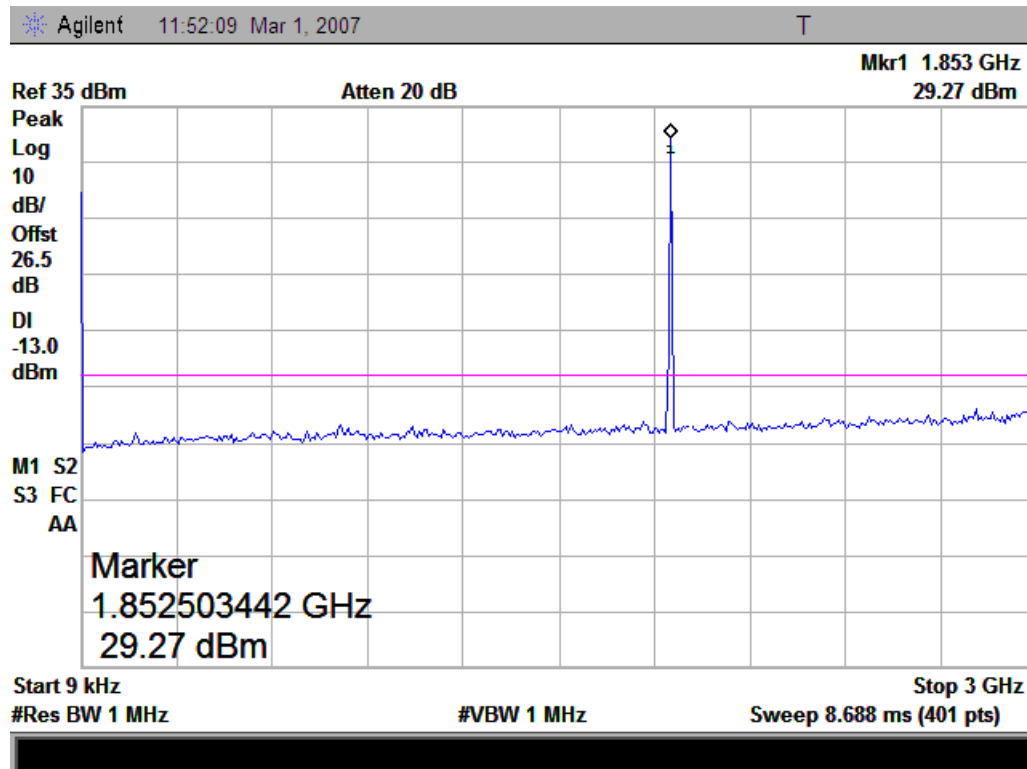
No.	Frequency (MHz)	Emission Power (dBm)	Limit (dBm)	Result
TCH number set to 512 (1850.20MHz)				
1	3700.40	---	< -13	PASS
2	5550.60	---	< -13	PASS
3	7400.80	---	< -13	PASS
4	9251.00	---	< -13	PASS
5	11101.20	---	< -13	PASS
6	12951.40	---	< -13	PASS
7	14801.60	---	< -13	PASS
8	16651.80	---	< -13	PASS
9	18502.00	---	< -13	PASS
TCH number set to 661 (1880.00MHz)				
10	3760.00	---	< -13	PASS
11	5640.00	---	< -13	PASS
12	7520.00	---	< -13	PASS
13	9400.00	---	< -13	PASS
14	11280.00	---	< -13	PASS
15	13160.00	---	< -13	PASS
16	15040.00	---	< -13	PASS
17	16920.00	---	< -13	PASS
18	18800.00	---	< -13	PASS
TCH number set to 810 (1909.80MHz)				
19	3819.60	---	< -13	PASS
20	5729.40	---	< -13	PASS
21	7639.20	---	< -13	PASS
22	9549.00	---	< -13	PASS
23	11458.80	---	< -13	PASS
24	13368.60	---	< -13	PASS
25	15278.40	---	< -13	PASS
26	17188.20	---	< -13	PASS
27	19098.00	---	< -13	PASS

## 2. Plots for Spurious Emission:

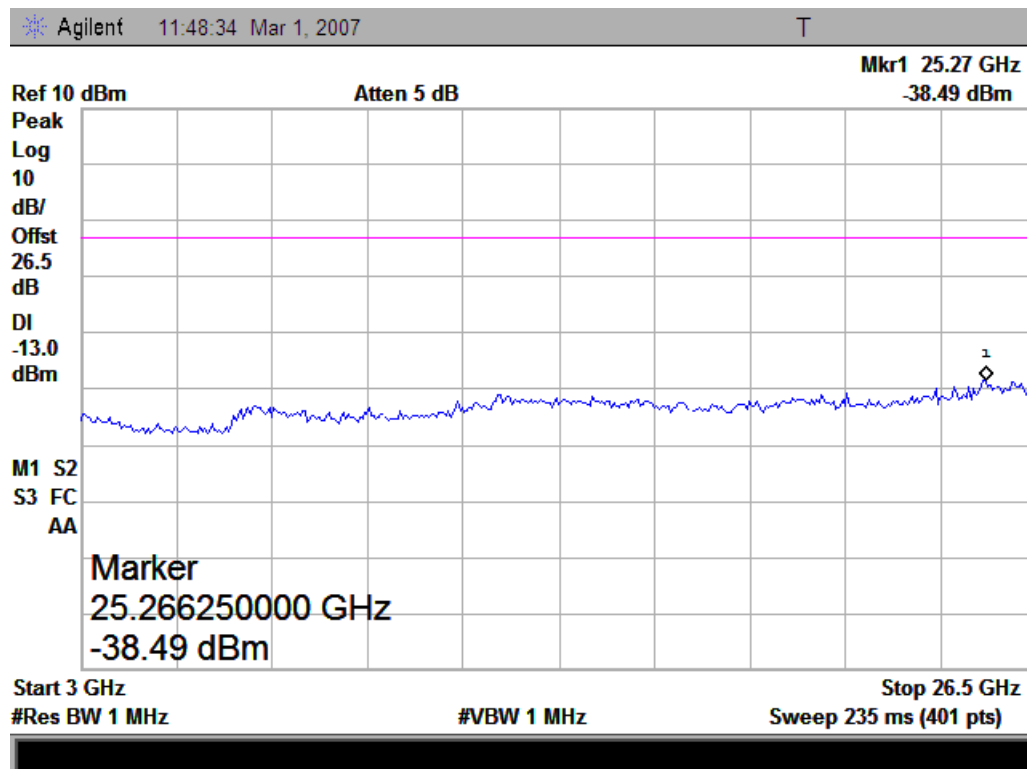
The measuring frequency range is divided into two parts: 9kHz - 3GHz and 3GHz - 26.5GHz.

Note: The marked points in the plots below are from the MS and the SS transmitting frequency points which should be ignored.

### 2.1 Plot when the TCH number set to 512:

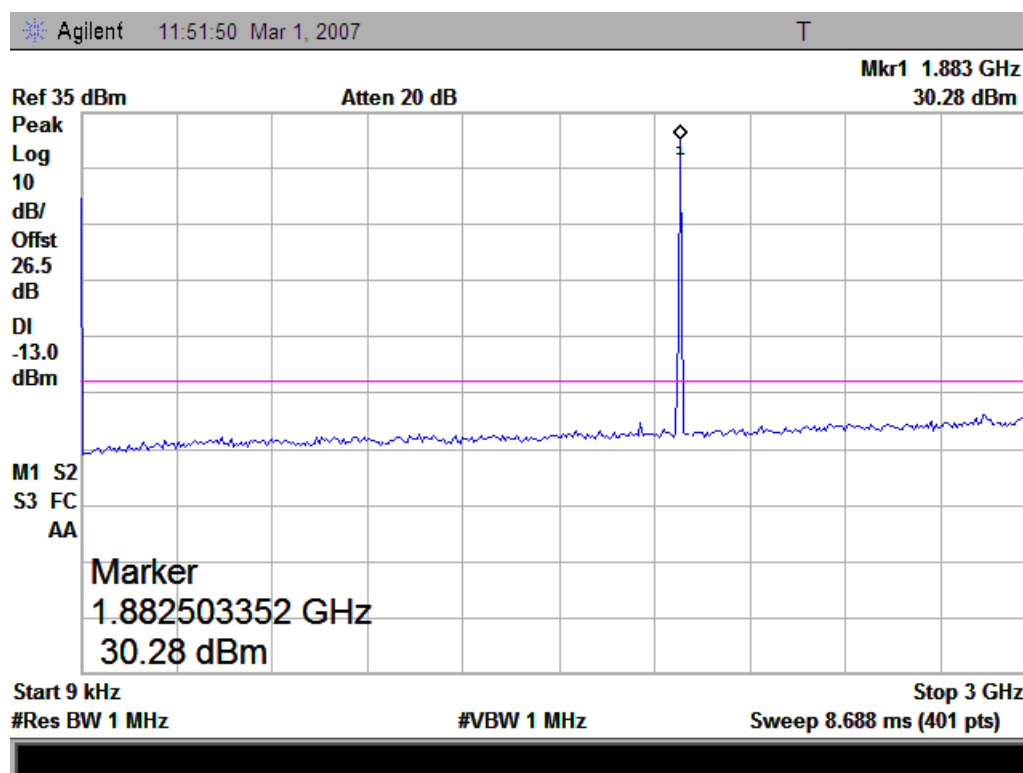


(9kHz - 3GHz)

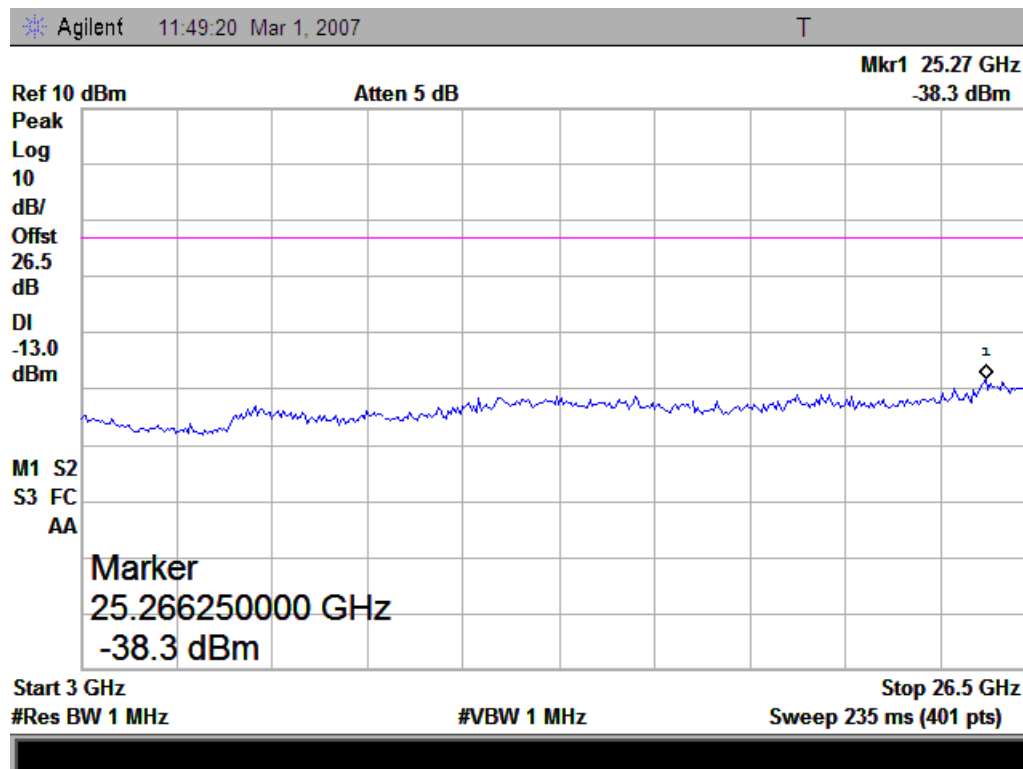


(3GHz - 26.5GHz)

2.2 Plot when the TCH number set to 661:



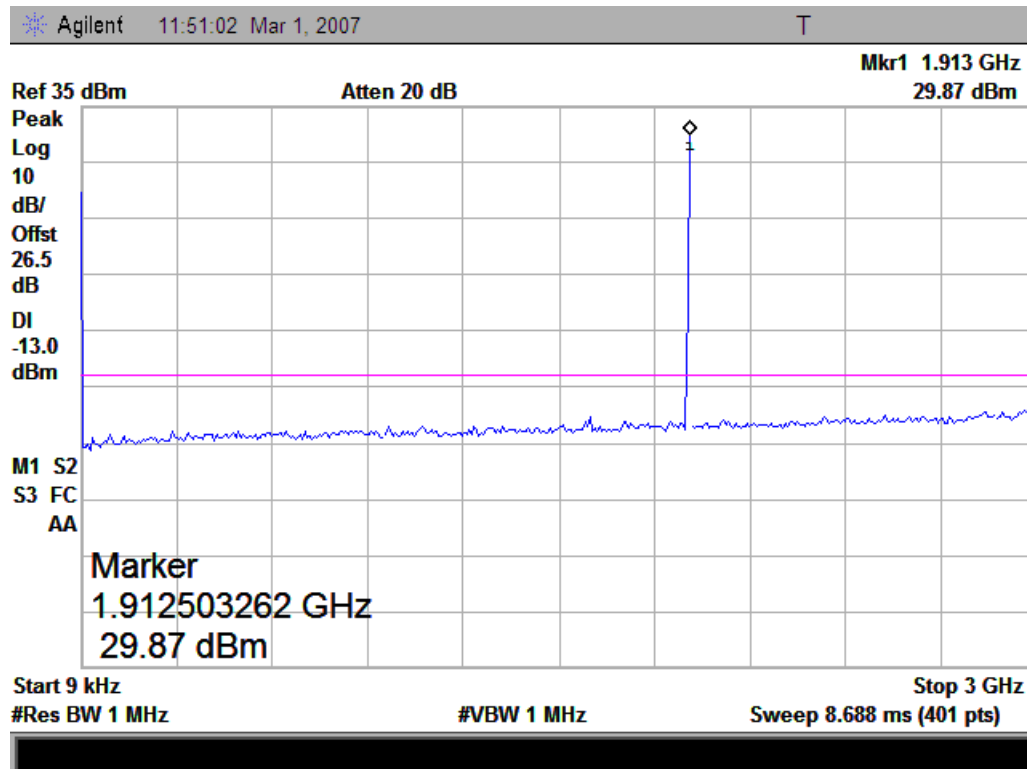
(9kHz - 3GHz)



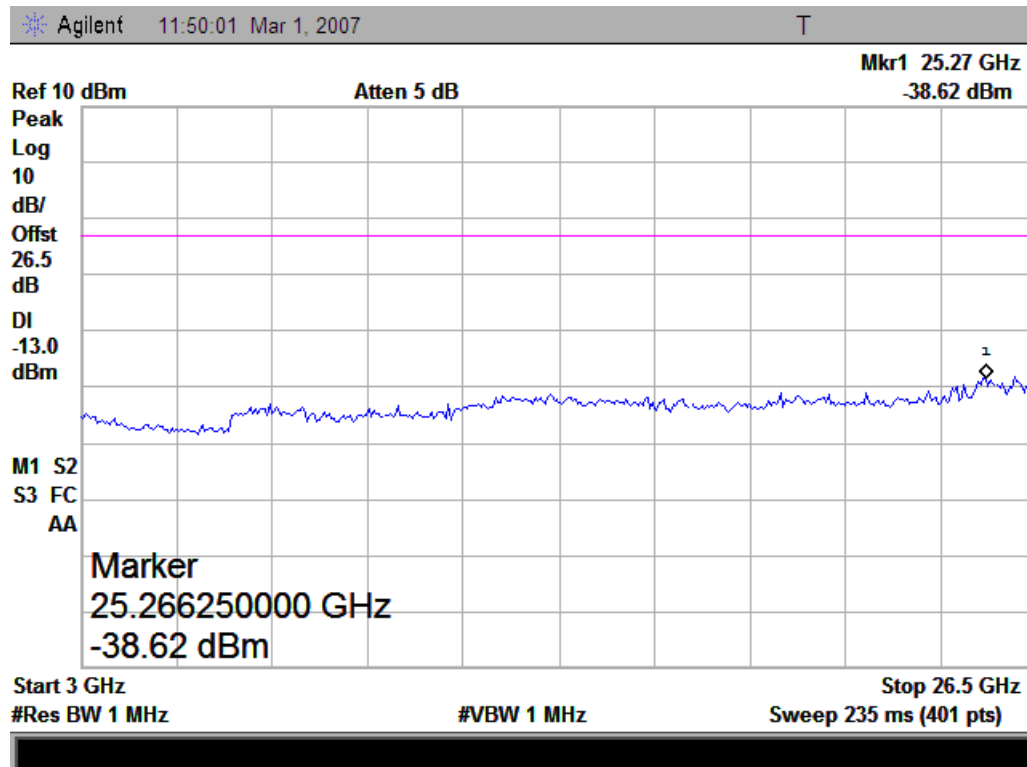
(3GHz - 26.5GHz)

2.3 Plot when the TCH number set to 810:





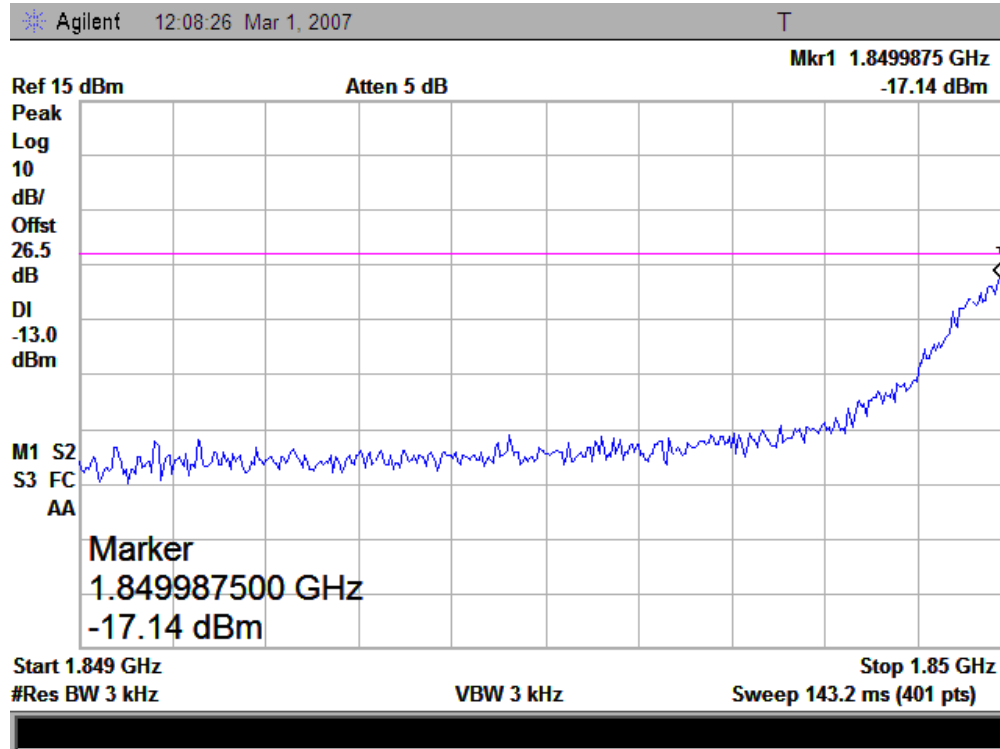
(9kHz - 3GHz)



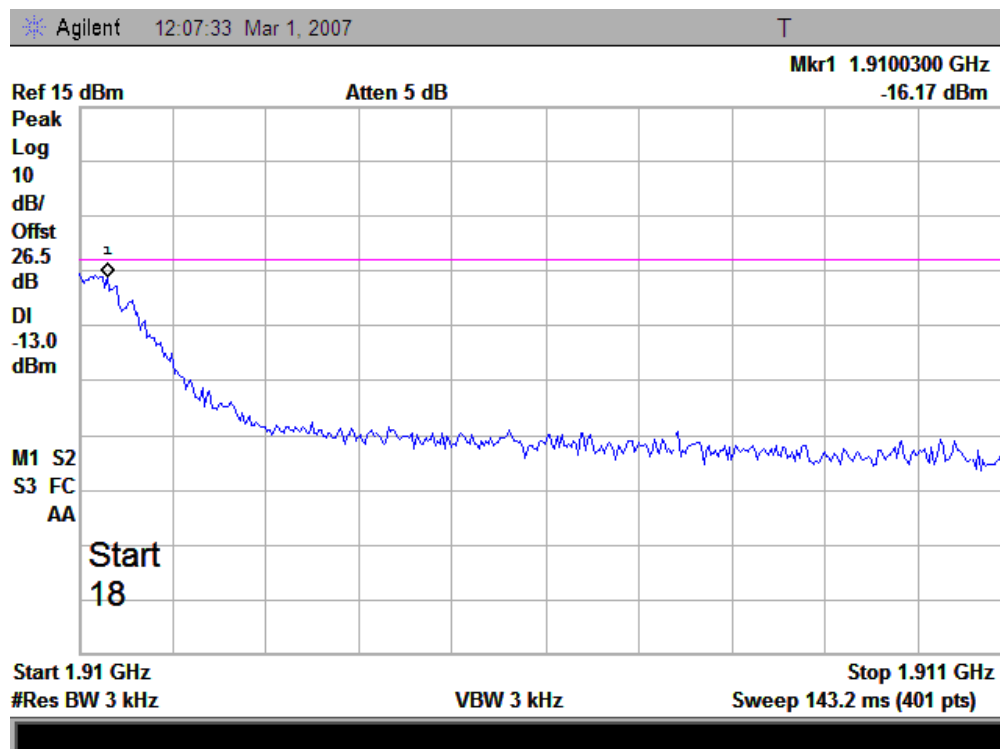
(3GHz - 26.5GHz)

### 3.5.3.2 Plot for Band-edge

- Plot when the TCH number set to 512:



- Plot when the TCH number set to 810:



### 3.6 Transmitter Radiated Power (EIRP/ERP)

#### 3.6.1 Requirement

According to FCC §24.232, the broadband PCS mobile station are limited to 2 Watts (33dBm) EIRP peak power.

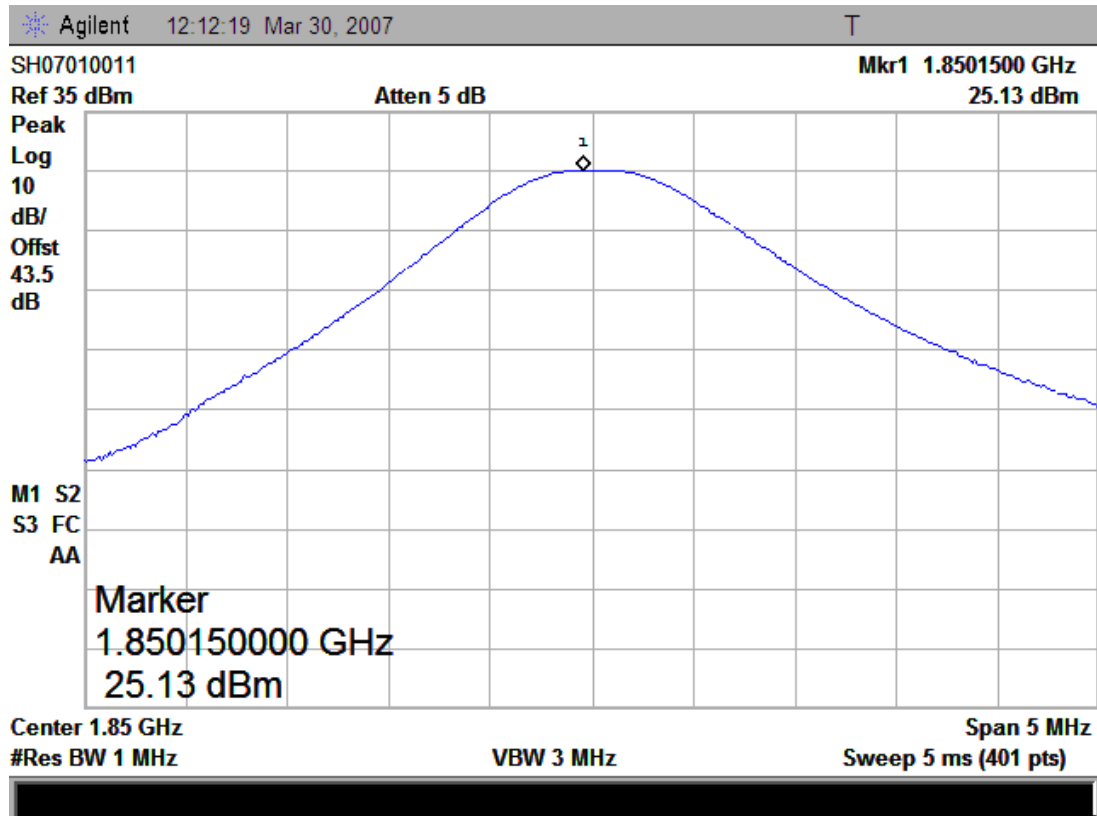
#### 3.6.2 Test Procedure

1. Perform test system setup as section 3.1.2.
2. The resolution bandwidth of the Spectrum Analyzer is set to be comparable to the emission bandwidth of the transmitter, e.g. for GSM modulated signal (here used): RBW=VBW=1MHz, for CDMA modulated signal: RBW=VBW=3MHz.
3. The low, middle and the high channels are selected to perform tests respectively. Set the TCH number to 512 as the low channel.
4. Employ the bi-log Test Antenna as the test system receiving antenna; set the polarization of the Test Antenna to be the same as that of the EUT transmitting antenna.
5. Set the frequency range of the Spectrum Analyzer suitably to capture the waveform; actuate the Turn Table to turn from 0 degrees to 360 degrees to find the maximum reading via the Spectrum Analyzer, mark the peak; finally record the peak and the plot.
6. Set the TCH number to 661 as the middle channel, then repeat step 5.
7. Set the TCH number to 810 as the high channel, then repeat step 5.

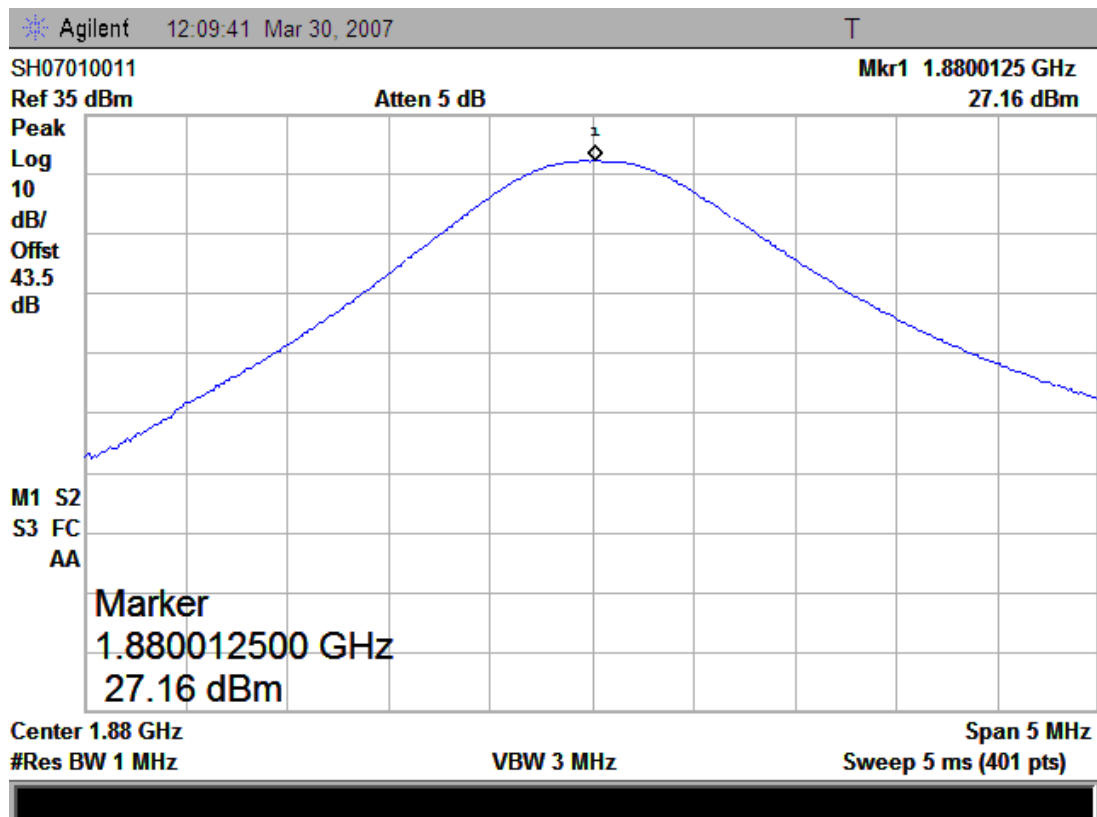
#### 3.6.3 Test Result

No.	Channel	Frequency (MHz)	Measured EIRP		Limit EIRP		Result
			dBm	W	dBm	W	
1	512	1850.2	25.13	0.33	< 33	< 2	PASS
2	661	1880.0	27.16	0.52	< 33	< 2	PASS
3	810	1909.8	23.58	0.23	< 33	< 2	PASS

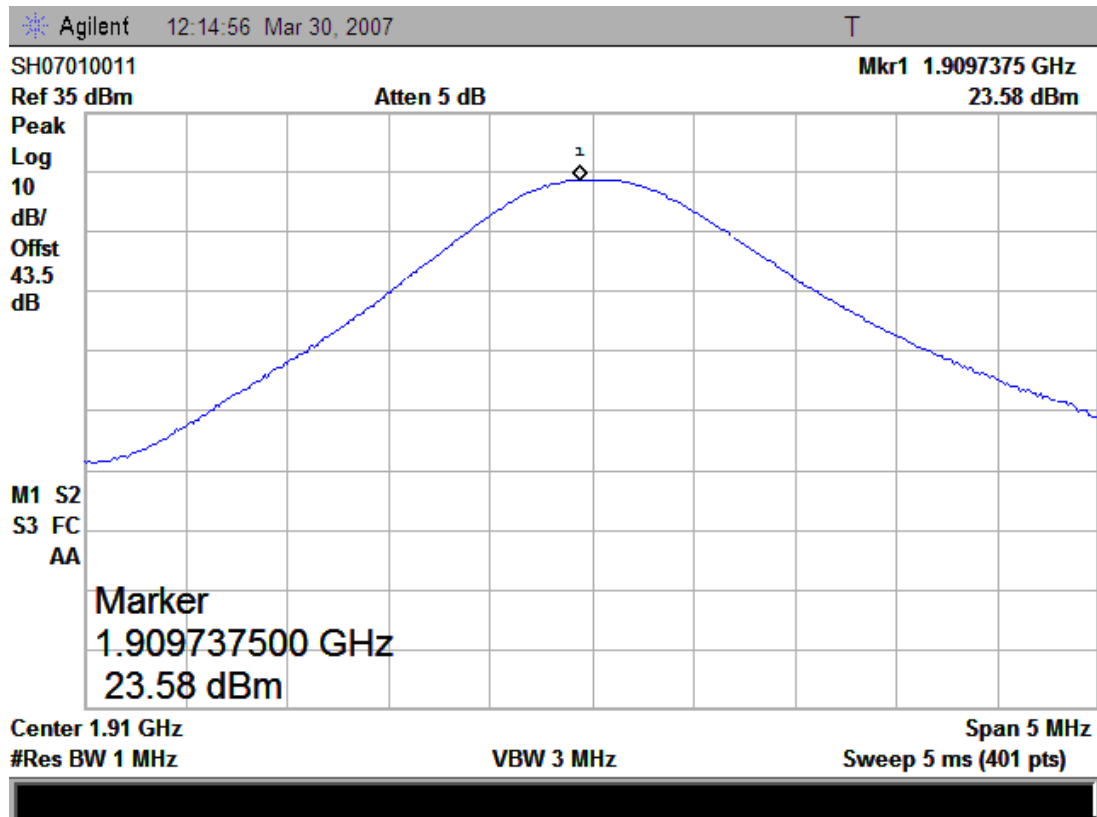
1. Plot when the TCH number set to 512:



2. Plot when the TCH number set to 661:



3. Plot when the TCH number set to 810:





### **3.7 Radiated Spurious Emission**

#### **3.7.1 Requirement**

According to FCC §24.238(a), the power of any emission outside of the authorized operating frequency ranges must be attenuated below the transmitting power (P) by a factor of at least  $43+10*\log(P)$ dB. This calculated to be -13dBm.

#### **3.7.2 Test Procedure**

1. Perform test system setup as section 3.1.2.
2. Make a limit line whose value is -13dBm on the Spectrum Analyzer, and set the RBW of the Spectrum Analyzer to 1MHz.
3. The low, middle and the high channels are selected to perform tests respectively. Set the TCH number to 512 as the low channel.
4. Employ the bi-log Test Antenna as the test system receiving antenna and set the frequency range of the Spectrum Analyzer from 30MHz to 3GHz.
5. The measurement is performed with the Test Antenna at both horizontal and vertical polarization respectively. Set the polarization of the Test Antenna to be horizontal.
6. Actuate the Turn Table to turn from 0 degrees to 360 degrees to find the maximum reading via the Spectrum Analyzer, mark the fundamental frequency and the harmonics thereof, after then record the harmonics and the plot.
7. Set the polarization of the Test Antenna to be vertical, then repeat step 6.
8. Employ the horn Test Antenna as the test system receiving antenna and set the frequency range of the Spectrum Analyzer from 3GHz to 10<sup>th</sup> harmonic of the fundamental frequency (here used 20GHz), then repeat step 5 to 7.
9. Set the TCH number to 661 as the middle channel, then repeat step 4 to 8.
10. Set the TCH number to 810 as the high channel, then repeat step 4 to 8.

#### **3.7.3 Test Result**

##### **3.7.3.1 Table for the Harmonics**

Note: The symbol “---” in the table following means that the emission power is too small to be measured and is at least 12dB below the limit.

No.	Frequency (MHz)	Emission Power (dBm)		Limit (dBm)	Result
		Test Antenna Vertical	Test Antenna Horizontal		
TCH number set to 512 (1850.20MHz)					
1	3700.40	-42.22	-47.01	< -13	PASS
2	5550.60	---	---	< -13	PASS
3	7400.80	---	---	< -13	PASS
4	9251.00	---	---	< -13	PASS
5	11101.20	---	---	< -13	PASS
6	12951.40	---	---	< -13	PASS
7	14801.60	---	---	< -13	PASS
8	16651.80	---	---	< -13	PASS
9	18502.00	---	---	< -13	PASS
TCH number set to 661 (1880.0MHz)					
10	3760.00	-42.65	-49.65	< -13	PASS
11	5640.00	---	---	< -13	PASS
12	7520.00	---	---	< -13	PASS
13	9400.00	---	---	< -13	PASS
14	11280.00	---	---	< -13	PASS
15	13160.00	---	---	< -13	PASS
16	15040.00	---	---	< -13	PASS
17	16920.00	---	---	< -13	PASS
18	18800.00	---	---	< -13	PASS
TCH number set to 810 (1909.80MHz)					
19	3819.60	-42.16	-50.37	< -13	PASS
20	5729.40	---	---	< -13	PASS
21	7639.20	---	---	< -13	PASS
22	9549.00	---	---	< -13	PASS
23	11458.80	---	---	< -13	PASS
24	13368.60	---	---	< -13	PASS
25	15278.40	---	---	< -13	PASS
26	17188.20	---	---	< -13	PASS
27	19098.00	---	---	< -13	PASS

### **3.8 Frequency Stability**

#### **3.8.1 Requirement**

According to FCC §24.235, the frequency stability shall be sufficient to ensure that the fundamental emission stays within the authorized frequency block.

According to FCC §2.1055, the test conditions are:

- (a) Temperature:  
The temperature is varied from  $-30^{\circ}\text{C}$  to  $+50^{\circ}\text{C}$  at intervals of not more than  $10^{\circ}\text{C}$ .
- (b) Primary Supply Voltage:  
For hand carried battery powered equipment, the primary supply voltage is reduced to the battery operating end point which shall be specified by the manufacture. The supply voltage shall be measured at the input to the cable normally provided with the equipment, or at the power supply terminals if cables are not normally provided.

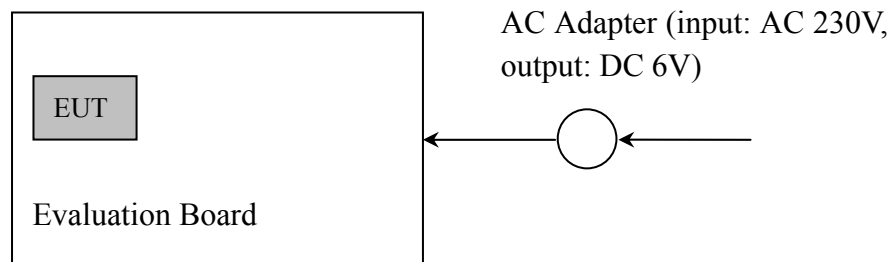
#### **3.8.2 Test Procedure**

1. Perform test system setup as section 3.1.3.
2. Set the voltage of the DC Power Supply to DC 6V. The temperature of the Temperature Chamber to vary from  $-30^{\circ}\text{C}$  to  $+50^{\circ}\text{C}$  at intervals of  $10^{\circ}\text{C}$ .
3. At each temperature level, the EUT is powered off and kept in the Temperature Chamber for two hours. After sufficient stabilization, turn on the EUT, command it via the System Simulator (SS) to operate at the maximum output power i.e. Power Control Level (PCL) = 0 and Power Class = 1, and then establish a communication link between the EUT and the SS.
4. The low, middle and the high channels are selected to perform tests respectively. Set the TCH number to 512 as the low channel.
5. The frequency deviation is measured (directly read from the SS, which can report the parameter) within three minutes.
6. Set the TCH number to 661 as the middle channel, then repeat step 5.
7. Set the TCH number to 810 as the high channel, then repeat step 5.
8. Adjust the temperature of the Temperature Chamber as specified in step 2, then repeat step 3 to 7.

### 3.8.3 Test Result

No.	Test Conditions		Frequency Deviation (Hz) at Channels Used			
	Voltage	Temperature	512	661	810	Limit (±1ppm)
1	6.0V	-30°C	-80.13	-60.64	-59.23	(a) ±1850Hz at 512 Channel (b) ±1880Hz at 661 Channel (c) ±1910Hz at 810 Channel
2		-20°C	-60.25	-59.32	-65.29	
3		-10°C	-48.87	-40.61	-56.26	
4		0°C	-30.56	40.25	-26.48	
5		+10°C	-38.11	-30.24	-40.57	
6		+20°C	-21.22	-27.51	-27.89	
7		+30°C	-45.63	35.03	-56.47	
8		+40°C	-55.81	-65.46	-60.78	
9		+50°C	84.26	-84.19	57.25	
Result: PASS						

Note: The EUT (Module) is positioned on the Evaluation Board which is powered by AC Adapter; the output of the AC Adapter is DC 6V. The EUT (Module) can not work without the Evaluation Board together with the AC Adapter. (see the figure below)



## I Photograph of the Test Setup



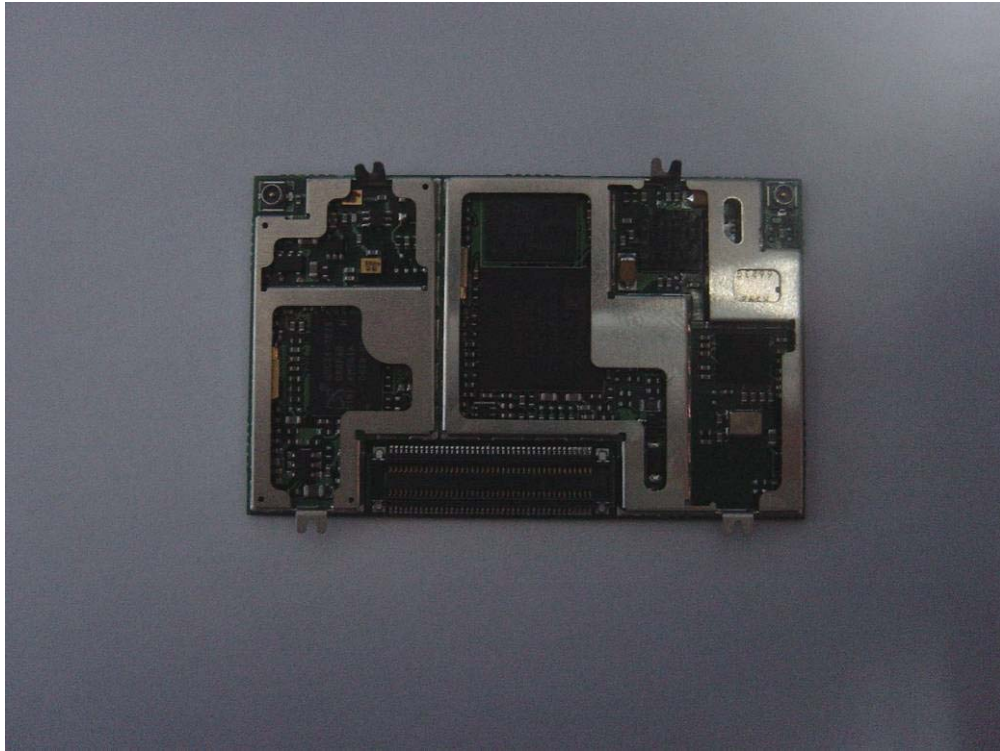
## II Photograph of the EUT

### 1. Appearance of the MS module

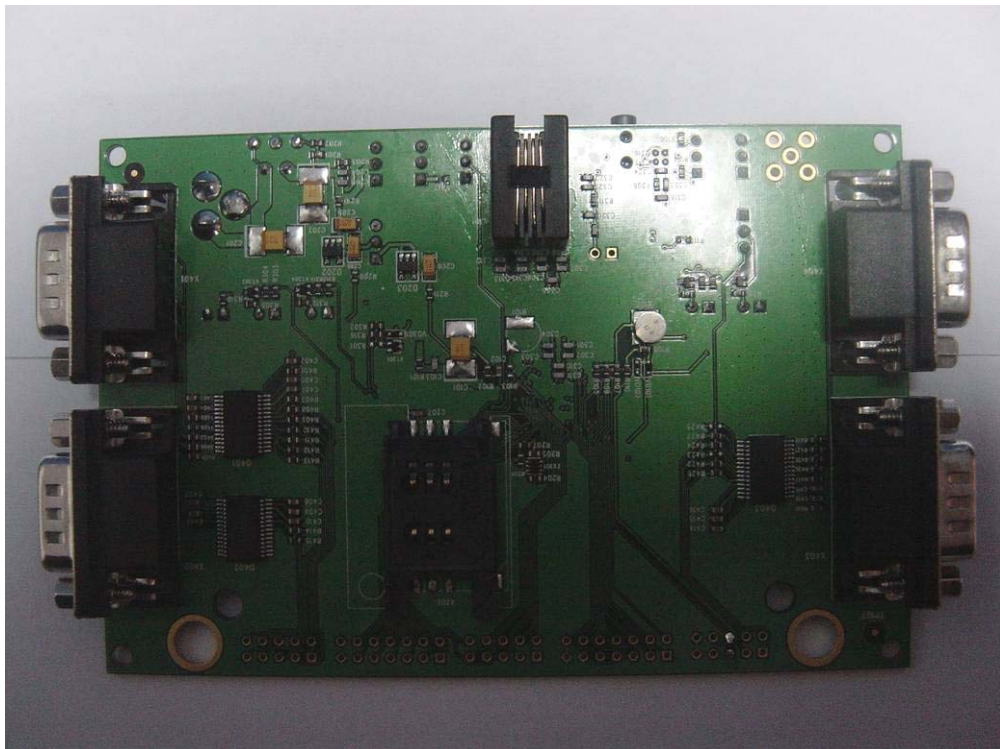


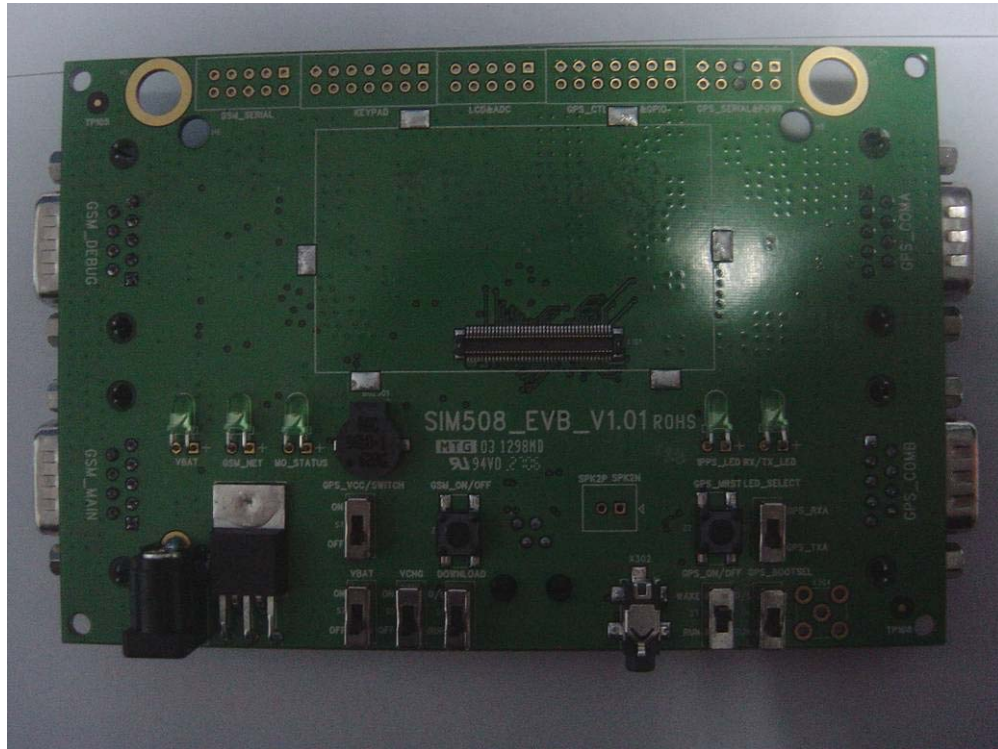


## 2. Inside of the MS module



## 3. Appearance of MS base





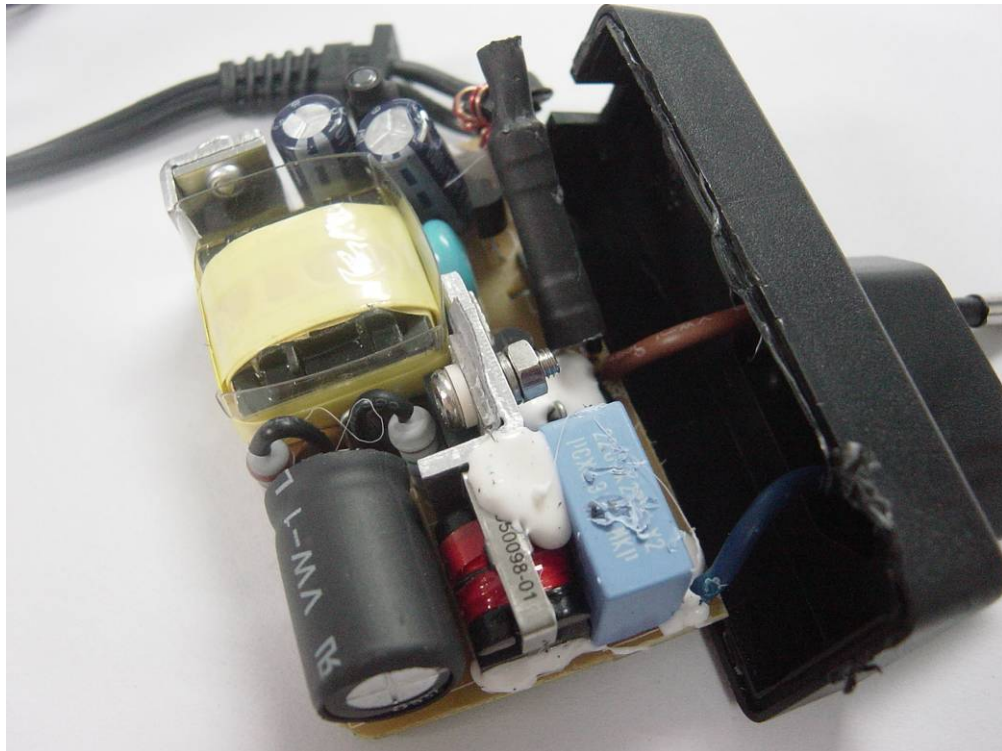
#### 4. Appearance of the Charge

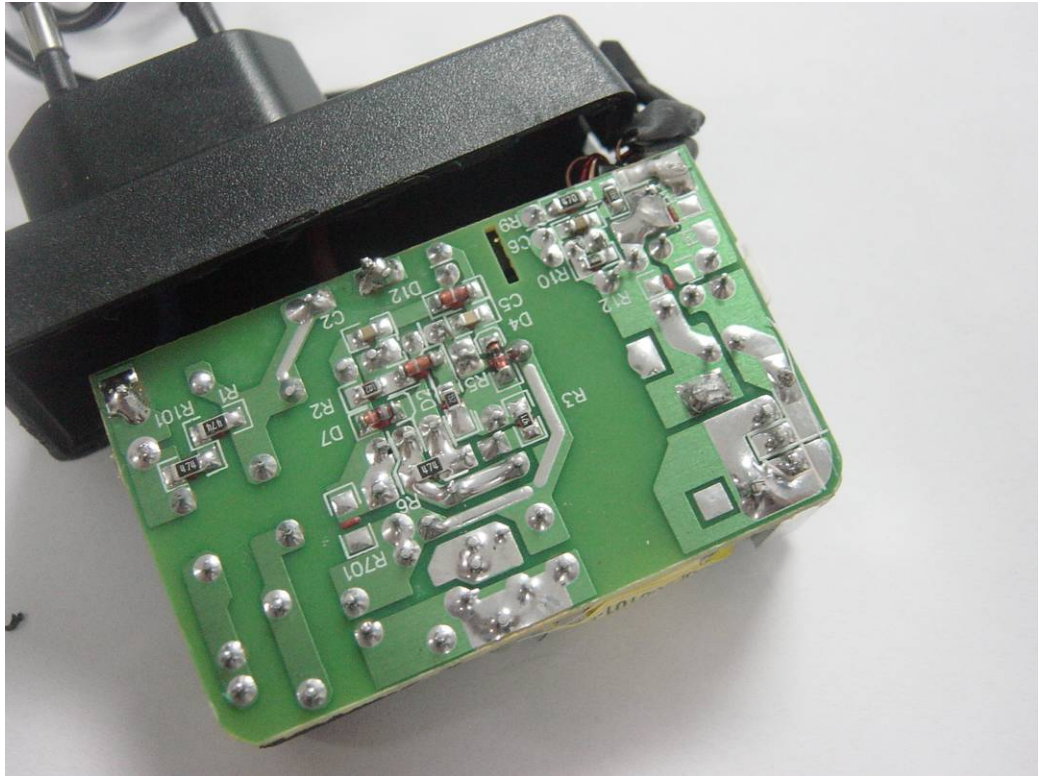






#### 5. Inside of the Charge





## 6. Cable

