

Ligitek Electronics Co., Ltd.

Surface Mounted Chip LED

Model No. : LG-150UR-CT

Features :

- Compatible with automatic placement equipment
- Compatible with reflow solder process

Applications :

- Automotive_Telecommunication
- Indicators
- LCD Back-lights
- Illuminations

Dice Material	Light Color	Lens Color
AlGaAs	High Red	Water Clear

Absolute Maximum Ratings

(Ta=25°C)

Item	Symbol	Maximum	Unit
Power Dissipation	P _D	78	mW
Continuous Forward Current	I _F	30	mA
Peak Forward Current (1/10 Duty Cycle 0.1ms Pulse Width)	I _{FP}	100	mA
Reverse Voltage	V _R	5	V
Derating Linear From 25°C		0.4	mA/°C
Operating Temperature Range	Topr	-30 to +80	°C
Storage Temperature Range	Tstg	-40 to +85	°C

Electrical / Optical Characteristics

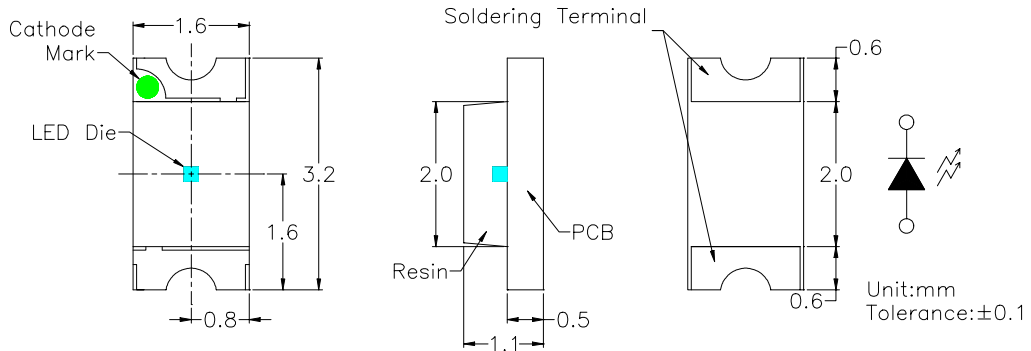
(Ta=25°C)

Item	Symbol	Condition	Min.	Typ.	Max.	Unit
Forward Voltage	V _F	IF=20mA		1.85	2.3	V
Reverse Current	I _R	VR=5V			10	uA
Peak Emission Wavelength	λ _P	IF=20mA		660		nm
Dominant Wavelength	λ _D	IF=20mA		640		nm
Viewing Angle	2θ 1/2	IF=20mA		140		Deg
Luminous Intensity	I _V	IF=20mA	15.0	28.0		mcd

ISSUE	VERSION :	DATE :	ENGINEER :
	A	2001/10/11	
	DIMENSION NO :	CHECKER :	APPROVER :

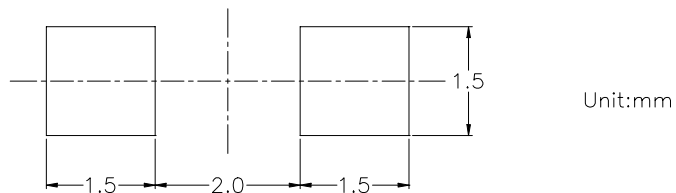
Ligitek Electronics Co., Ltd.

◆ Package Dimensions of Device (LG-150 Series)



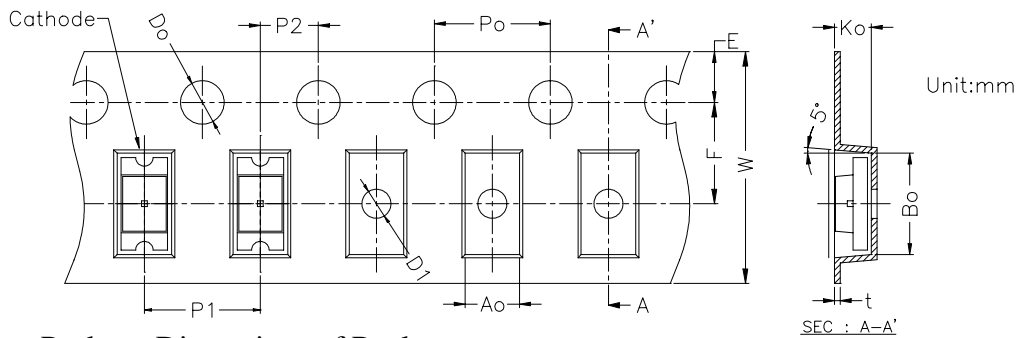
1. Soldering terminal may shift in x, y direction.
2. Polarity referring onto the cathode mark is reversed on the UR/HR/SR

◆ Recommended Soldering Pad Dimensions

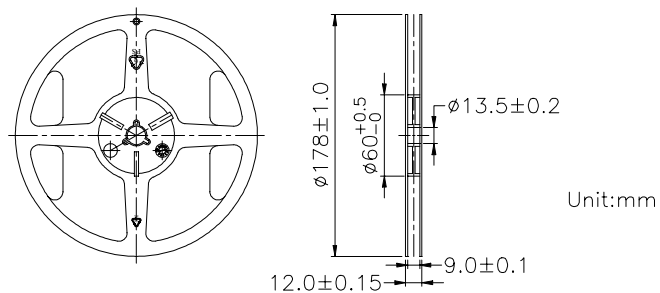


◆ Tape Specification : 3000pcs Per Reel

Packing Size													
Item	W	P1	E	F	D _o	D1	P _o	10P _o	P2	A _o	B _o	K _o	t
Spec.	8.00	4.00	1.75	3.50	1.50	1.00	4.00	40.00	2.00	1.85	3.45	1.52	0.22
Tolerance	±0.20	±0.10	±0.10	±0.05	^{+0.10} _{-0.00}	±0.05	±0.05	±0.20	±0.05	±0.10	±0.10	±0.10	±0.05

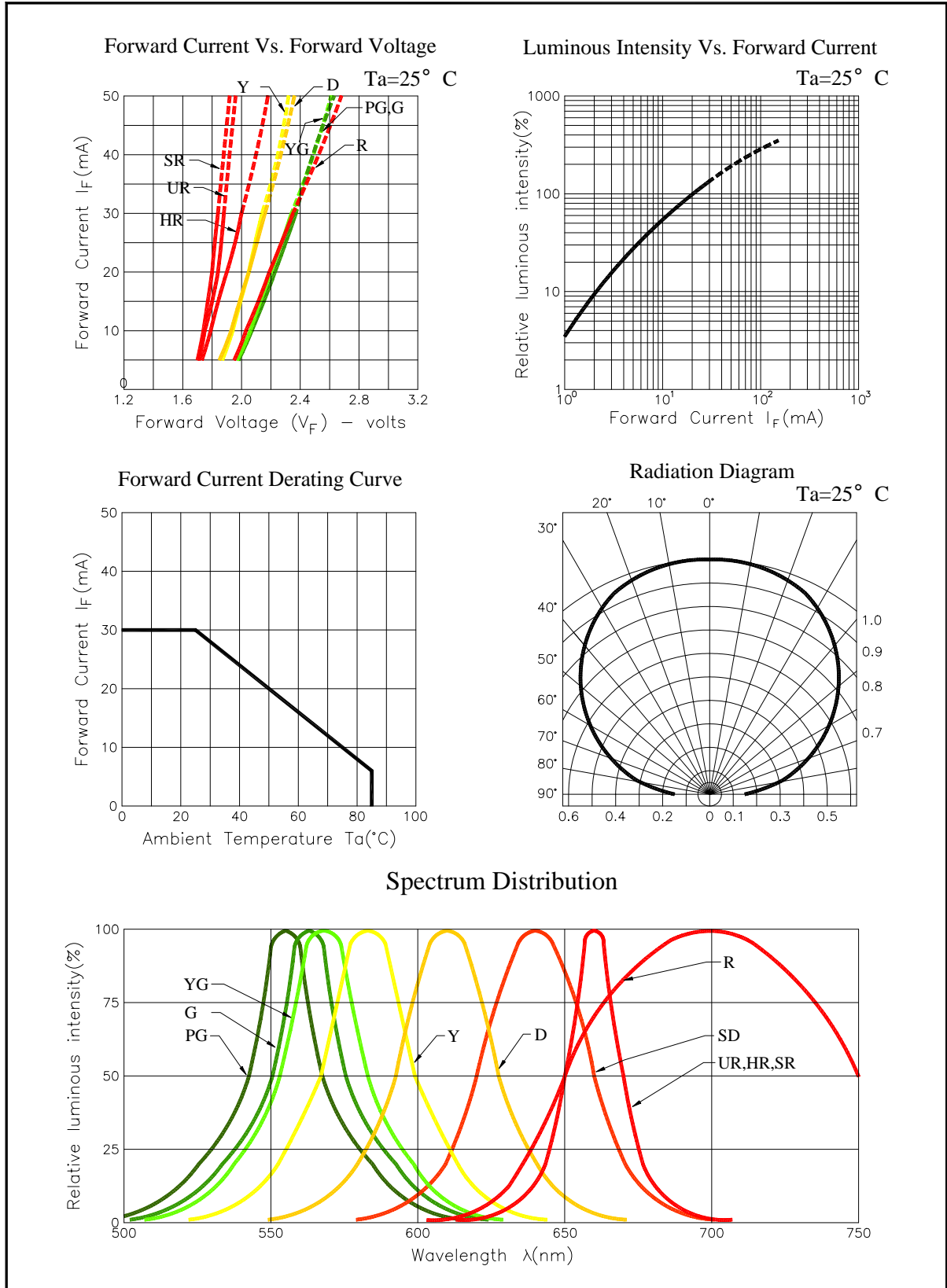


◆ Package Dimensions of Reel :



Ligitek Electronics Co., Ltd.

◆ Typical Electro-Optical Characteristic Curves:



Ligitek Electronics Co., Ltd.

◆ Packing and Shipping Spec.

