

1 2 3 4 5 6 7 8

A

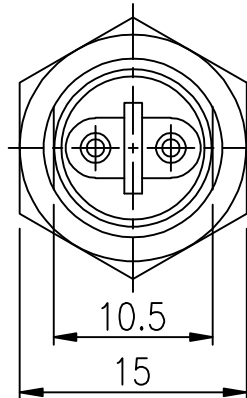
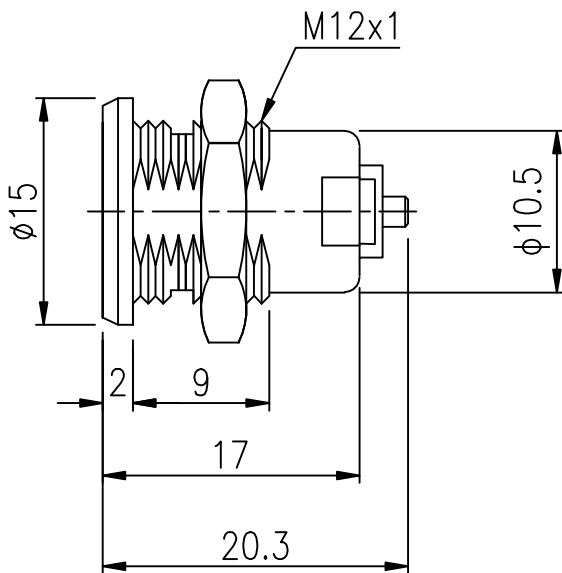
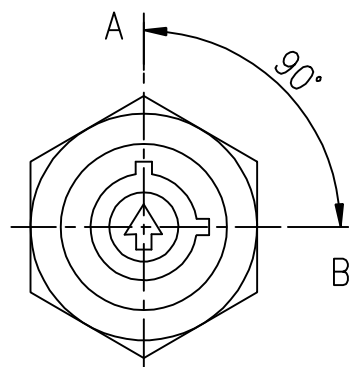
B

C

D

E

F



A

B

C

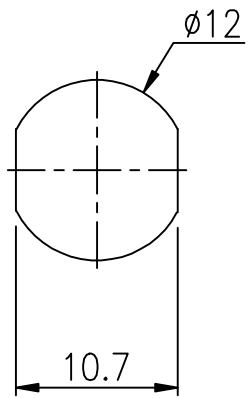
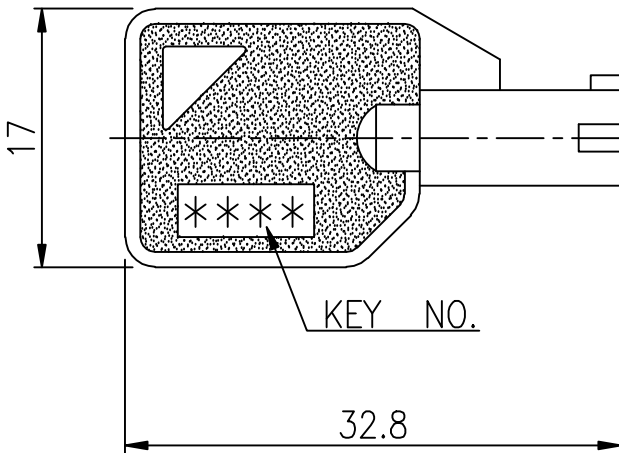
D

E

F

NOTES:

- . Zinc alloy die cast housing and cylinder.
- . Barrel chrome plated standard.
- . No pin tumbler mechanism.
- . Zinc alloy tubular keys, barrel chrome plated.
- . Key may be withdrawn in both or three positions.
- . Silver plated contacts and terminals.
- . NS1052 2 position (off-on) 2 terminals,
- . Hex nut or speed clip mounted.
- . All keyed alike or 6 combinations standard.
- . 6 combinations available.
- . Meet with ROHS.



Recommended hole size

DESCRIPTION	KEYLOCK SWITCH			
PART NO.	NS1052			
MATERIAL				
NOTE				
APPROVED BY	李國雄	CHECKED BY	李國雄	DRAWN BY 陳虹穎
TOLERANCES	⌀	UNIT	mm	SCALE 2:1
<div> </div>				
REV.	A	WT.	g	DATE 12.29.10

REV. NO.	COORDINATES	WAS	NEW	DATE	BY
1	2	3	4	5	6